

Risk Report 2013Q3

Published 12 November 2013

Contents

The Risk Report has been prepared by Realkredit Danmark's analysts for information purposes only. Realkredit Danmark will publish an updated Risk Report quarterly.

The Risk Report offers an update on the performance of mortgage collateral supporting mortgage bonds and mortgage covered bonds (covered bonds) issued by Realkredit Danmark.

Contents of the report falls into two parts. The first part contains general market information relevant to the performance of mortgage collateral. The second part contains Realkredit Danmark specific information. Contents of the report are:

1 Key Market Indicators

- House Prices
- Homeowners Equity
- Geographical Dispersion
- Unemployment and Real Wage Growth
- Homeowner Affordability
- Foreclosures
- Danish economic outlook

2 Key Collateral Indicators

- Dispersions Loan to Value Ratios
- Loan to Value Ratios and Borrower Classifications
- Mortgage Collateral Breakdowns — Total, Capital Centre S and Capital Centre T
- Borrower Exposure to Interest Rates
- Arrears and Repossessions
- Over Collateralisation and Capitalisation
- Supplementary Collateral
- Guarantees
- Market Risk Exposures and Liquidity

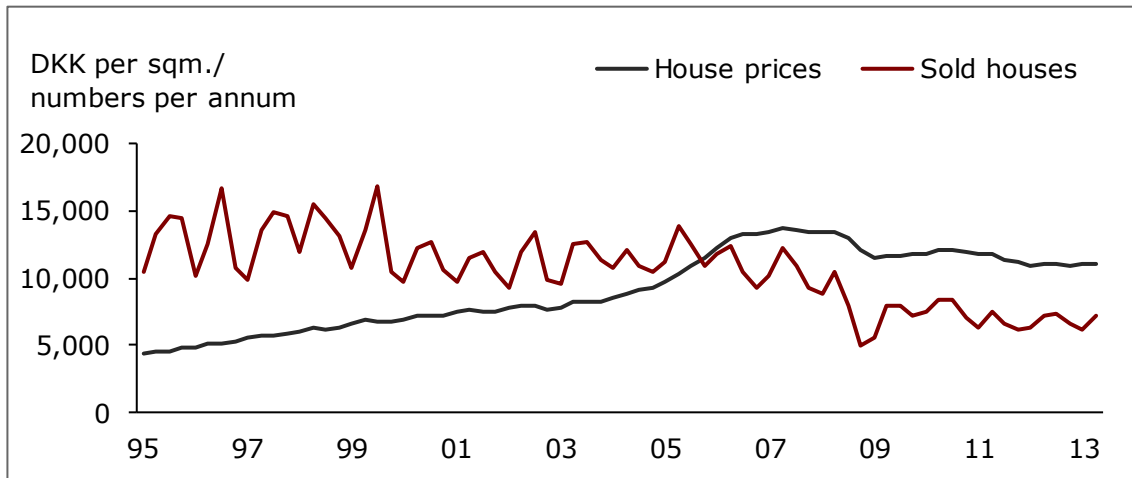
Key Market Indicators

General Market Information

1 House Prices and Homeowners Equity

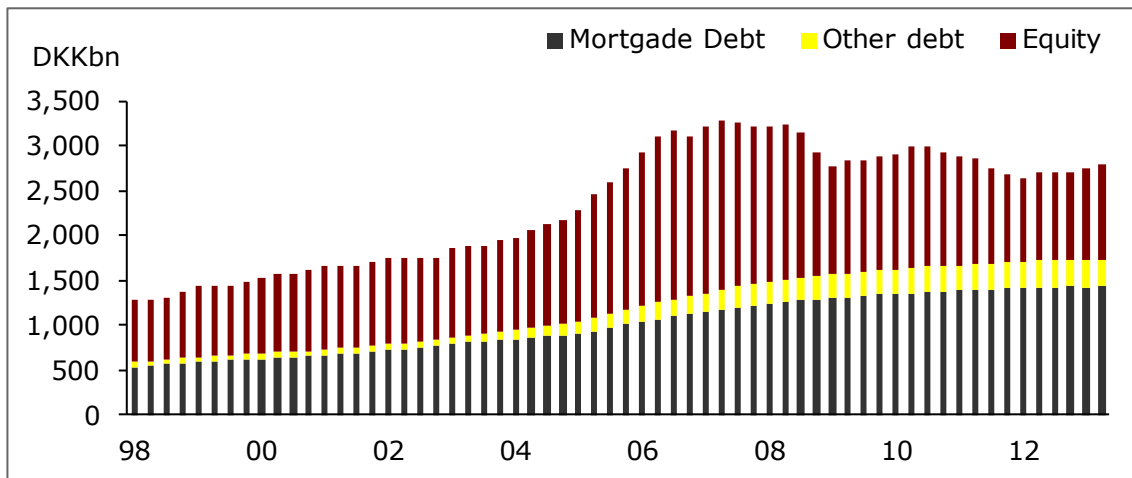
House Price Trends

- House prices are now stable
- House prices are down 19% for detached housing from the peak mid 2007
- Expectations are for house prices to continue the current stabilization yet uncertainty is high
- Signs of increasing number of houses sold but still low activity



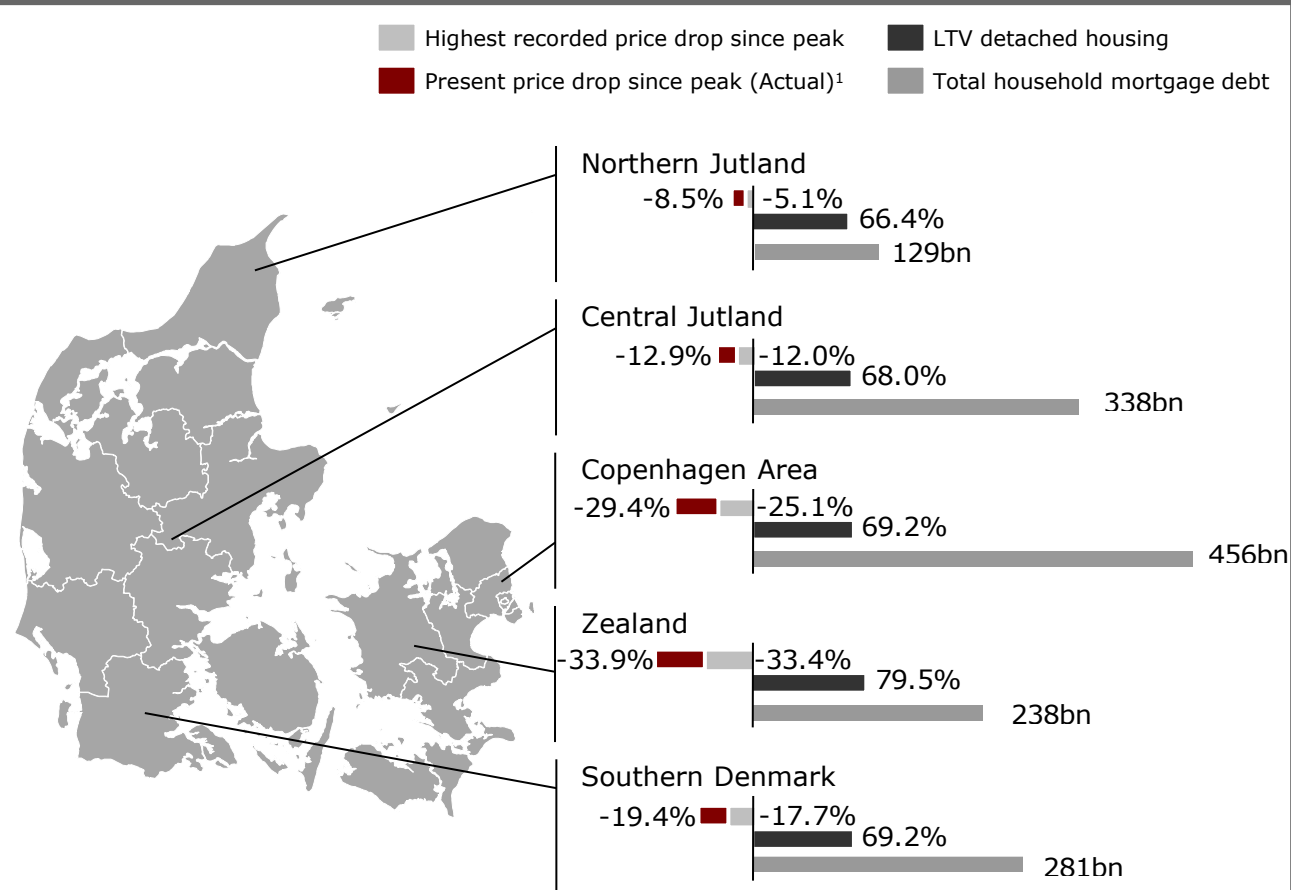
Homeowners Equity

- Homeowners' equity peaked 2006Q3 at 1,887bn. Since then equity has dropped by 830bn
- 47% of the drop can be explained by house price deflation — 53% is due to additional lending



1 Geographical Dispersion

Private lending in Denmark in total



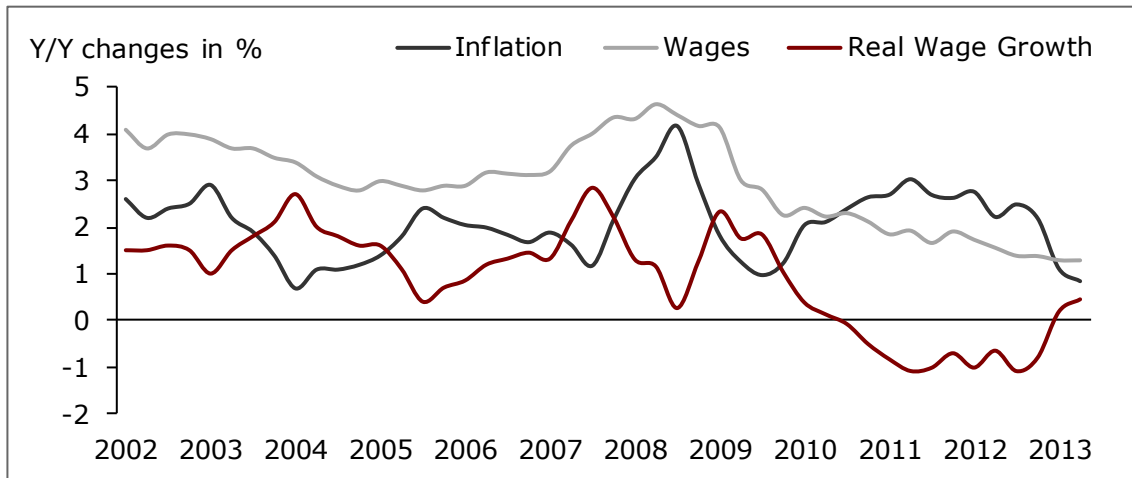
- House prices are now on a 2005 level
- The Copenhagen area was the first to suffer from house price deflation, following a decade of soaring house prices. Prices are now 25% down from the peak in mid 2006
- Prices are again rising in the Copenhagen area

¹. If actual price drop is lower than the highest recorded price drop it means that prices are recovering

1 Unemployment and Real Wage Growth

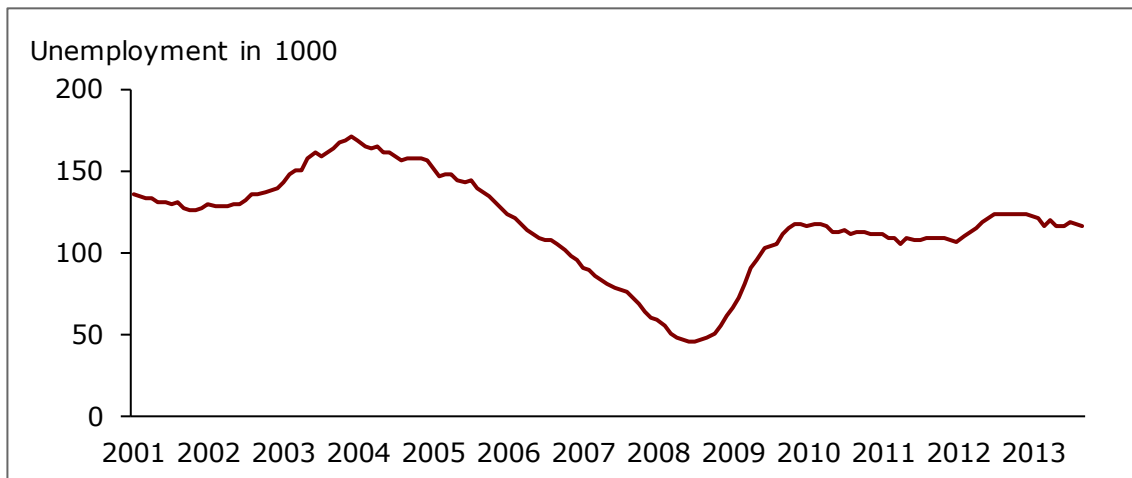
Real Wage Growth

- Real wage growth in Q2 is now back at a 2010 level after a period with negative growth rates
- Wage development is expected to be close to the inflation rate in 2013



Unemployment

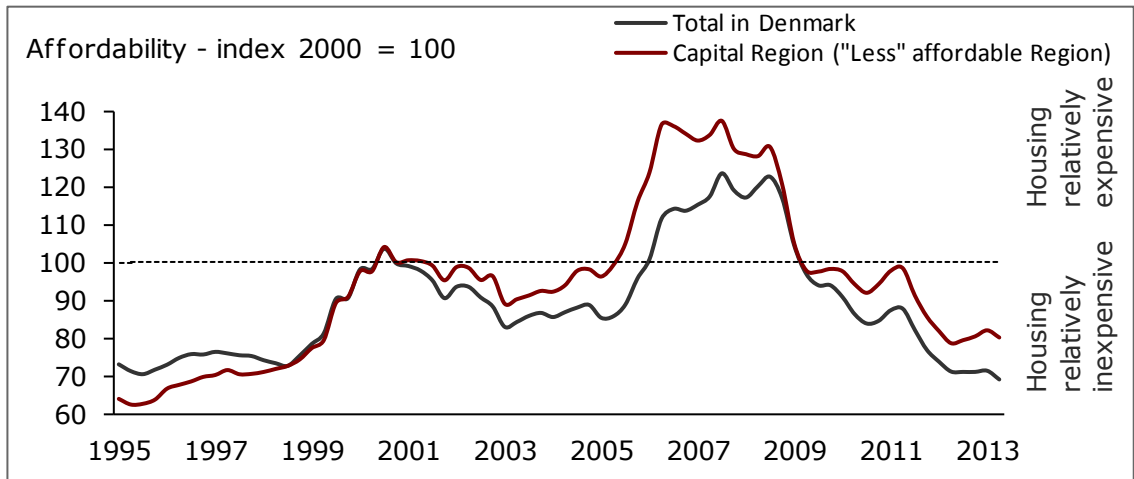
- Net unemployment stood at 115,700 end Q3 2013 up from a historical low of 45,000 in mid 2008
- This is equivalent to an unemployment (net) rate of 4.4%. Gross unemployment rate defined as net unemployment plus persons in activation schemes are at 5.7%
- The unemployment rate is expected to stay at around current levels the coming quarters



1 Homeowner Affordability and Foreclosures

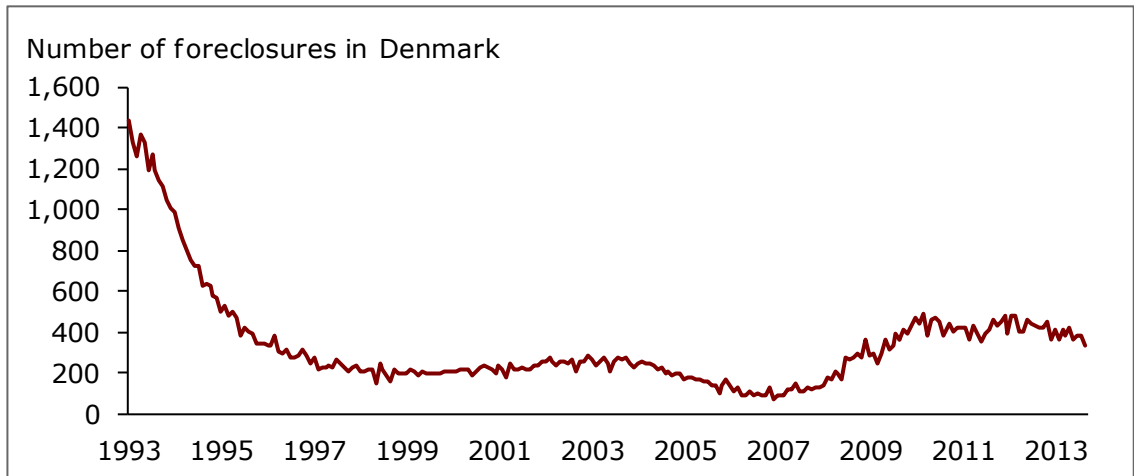
Homeowner Affordability

- House price deflation and lower interest rates has made housing more affordable even in the Copenhagen area
- Housing costs are now at the lowest level since the middle of the 1990's



Foreclosures

- The number of foreclosed properties in Denmark in September 2013 was 331
- We expect the numbers to stay at the current level throughout 2013
- The duration of a foreclosure is approx. 6 months from missed payments to completion



1 Political measures and outlook

Denmark ■ Euro Zone ■	2012		2013		2014	
GDP	-0.4	-0.6	0.3	-0.4	1.5	1.3
Private Consumption	0.5	-1.3	0.3	-0.4	1.1	0.7
Fixed investments	-0.1	-4.3	0.7	-4.0	1.2	0.8
Export	0.2	2.7	0.7	0.1	2.9	4.2
Unemployment %	6.1	11.4	5.7	12.1	5.5	12.1

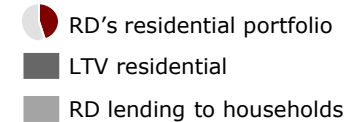
Danish Economy Outlook

- The growth in the Danish economy is expected to be close to 0 in 2013
- Risk of slower global growth – especially in Europe - is a concern to the Danish economy which is highly dependent on exports
- Interest rates are a key element in the household economy. We still expect very low interest rates in the near future

Key Collateral Indicators

Realkredit Danmark Specific Information

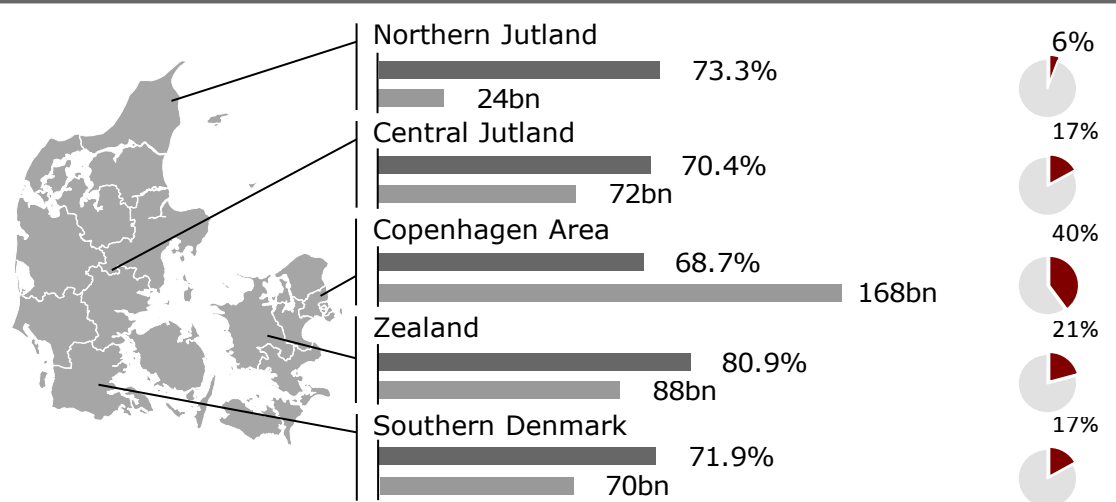
2 Dispersion and Loan to Value Ratios



Dispersion of RD's residential portfolio

- RD's loan portfolio is concentrated in the Copenhagen area and on Zealand where prices have been reduced the most
- Homeowner equity remains highest in the Copenhagen area although LTV ratios have been exposed to a large increase
- Although the affordability ratio in the capital region is expected to rise it is still below index 100
- A minor decrease in the household mortgage debt was recorded in Q3 2013

Geographical Dispersion in Realkredit Danmark



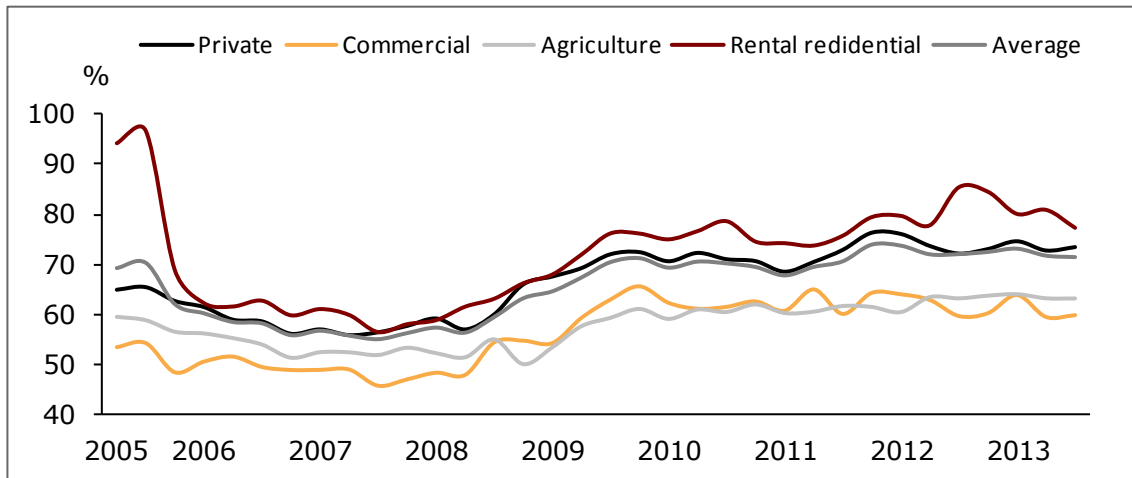
Loan To Value Ratios

- Covered bonds are secured by a first claim on the mortgage collateral and the reserves of the issuer
- LTV ratios of the mortgage collateral are maximised by legislation at 80% in residential segments and 60% in commercial segments (70% if the outmost 10% are secured by additional collateral). Lending beyond these limits is prohibited
- LTV ratios are monitored on an ongoing basis based on current market values of the property and current prepayment value of the mortgages
- 34% of mortgage collateral securing covered bonds issued by Realkredit Danmark has a current LTV ratio of 20% or less. More than 62% has a current loan to value ratio lower than 40%
- Foreclosure costs are typically less than 15% of the outstanding loan balance

2 Loan To Value and Borrower Classifications

Loan to Value

- Average loan to value ratios across market segments are 71% in Q3 2013 compared to 72% in Q3 2012
- LTV's for Commercial and Agriculture are based on few observations to confirm correct price levels



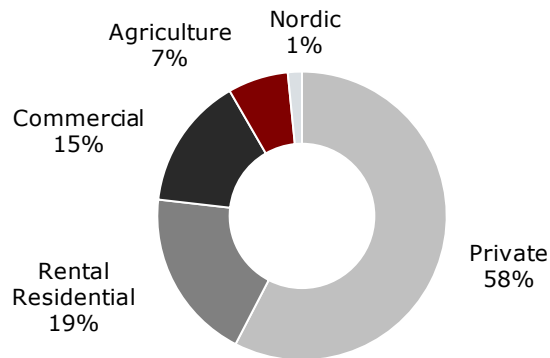
Borrower Classifications

- Borrowers' financial strength is classified on a scale from 1 to 11, 1 being the highest score
- Approx. 9bn of total lending is secured by mortgages above the 80% LTV limit for which the borrowers' financial strength is classified 8-11 — equivalent to 1% of the portfolio

DKKbn	Rating Category (Scaled 1-11)			
	1-3	4-7	8-11	Total
LTV				
0-20 %	48	182	20	250
20-40 %	33	153	18	205
40-60 %	21	114	16	151
60-80 %	10	62	10	82
> 80 %	8	29	9	46
Total	120	540	73	733

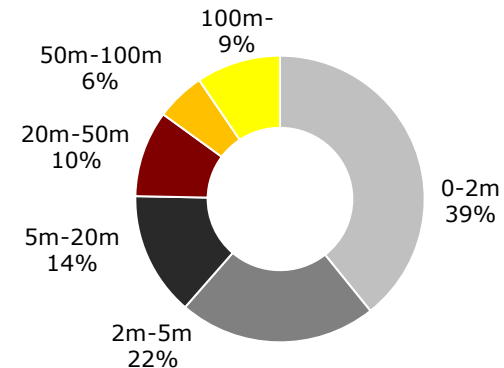
2 Collateral Breakdowns — Total portfolio

Borrower Segmentation



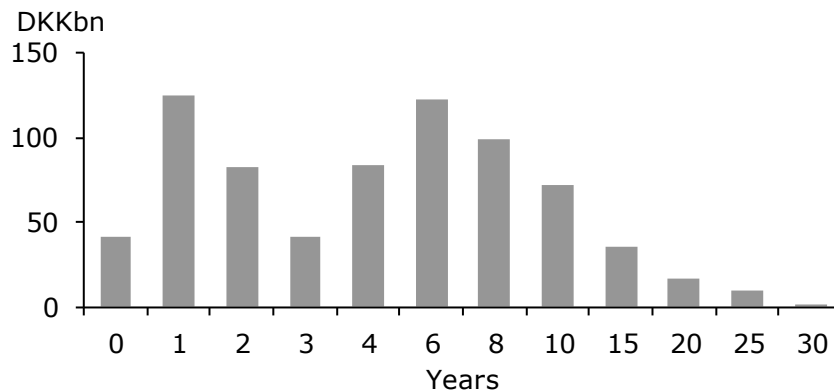
Note: Total lending distributed on segments

Outstanding Loan Balance



Note: Total lending distributed on outstanding loan balances

Portfolio Seasoning



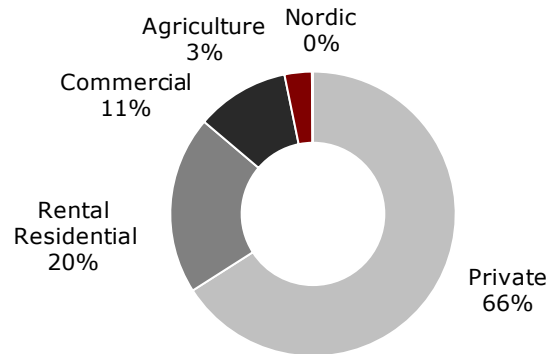
Outstanding Debt in DKKbn by LTV ratio

Segment	0-20%	20-40%	40-60%	60-80%	>80%	Total DKKbn
Private	134	117	90	56	25	422
Commercial	44	37	26	8	5	120
Agriculture	18	15	10	4	2	50
Rental Residential	54	35	25	15	13	142
Weighted dist.	34%	28%	21%	11%	6%	100%
Total, DKKbn	250	205	151	82	46	733

Average LTV: 70.6%

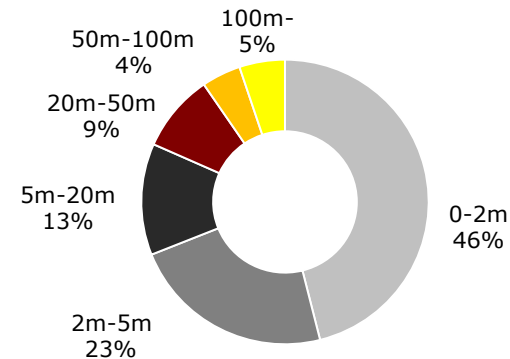
2 Collateral Breakdowns — Capital Centre S

Borrower Segmentation



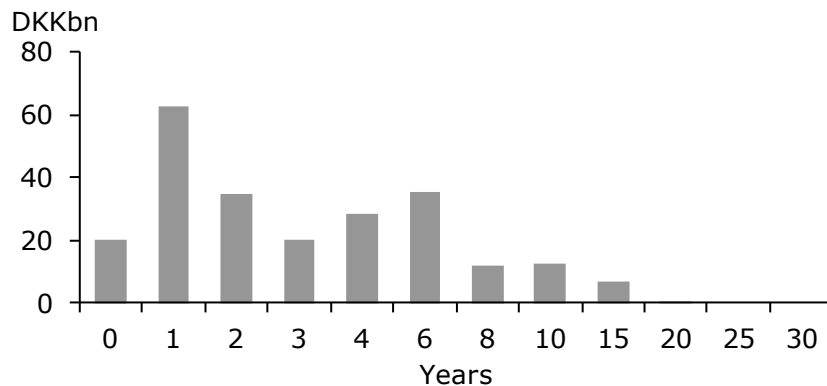
Note: Total lending distributed on segments

Outstanding Loan Balance



Note: Total lending distributed on outstanding loan balances

Portfolio Seasoning



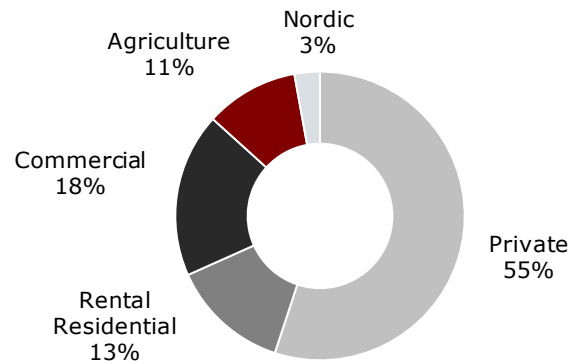
Outstanding Debt in DKKbn by LTV ratio

Segment	0-20%	20-40%	40-60%	60-80%	>80%	Total DKKbn
Private	47	43	34	21	9	154
Commercial	8	7	5	2	1	25
Agriculture	3	2	1	1	0	7
Rental Residential	19	12	7	4	4	47
Weighted dist.	33%	28%	21%	12%	6%	100%
Total, DKKbn	77	65	48	28	15	233

Average LTV: 68.7%

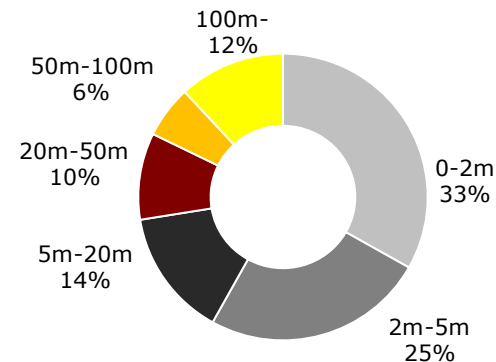
2 Collateral Breakdowns — Capital Centre T

Borrower Segmentation



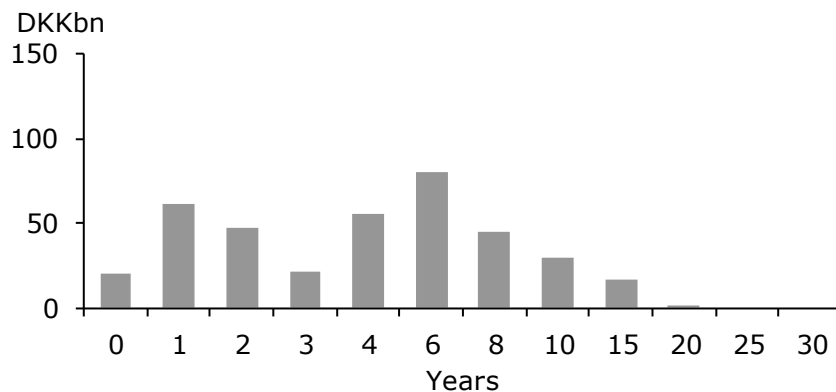
Note: Total lending distributed on segments

Outstanding Loan Balance



Note: Total lending distributed on outstanding loan balances

Portfolio Seasoning



Outstanding Debt in DKKbn by LTV ratio

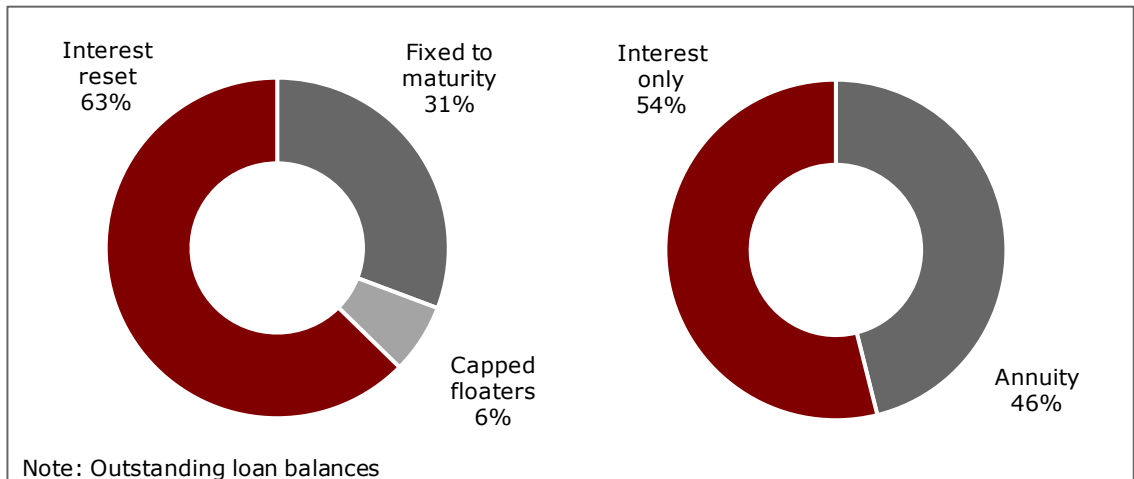
Segment	0-20%	20-40%	40-60%	60-80%	>80%	Total DKKbn
Private	63	57	46	30	13	209
Commercial	30	26	17	4	3	80
Agriculture	14	12	8	3	2	40
Rental Residential	16	13	11	6	4	51
Weighted dist.	33%	29%	22%	11%	6%	100%
Total, DKKbn	123	108	82	43	22	379

Average LTV: 69.4%

2 Borrower Exposure to Interest Rates

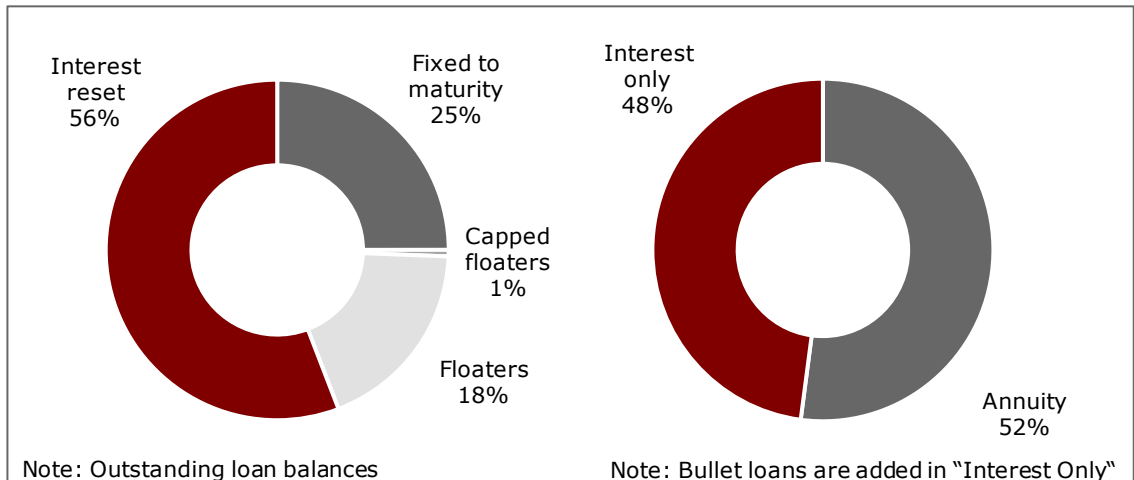
Private Segment

- Homeowners must be able to service a 30-year fixed rate annuity loan for Realkredit Danmark to underwrite
- For the past decade borrowers have remortgaged from fixed rate into interest reset — now accounting for 63% of the loan book. Expectations are for this trend to reverse since fixed rates are now 3.5%



Corporate Segments

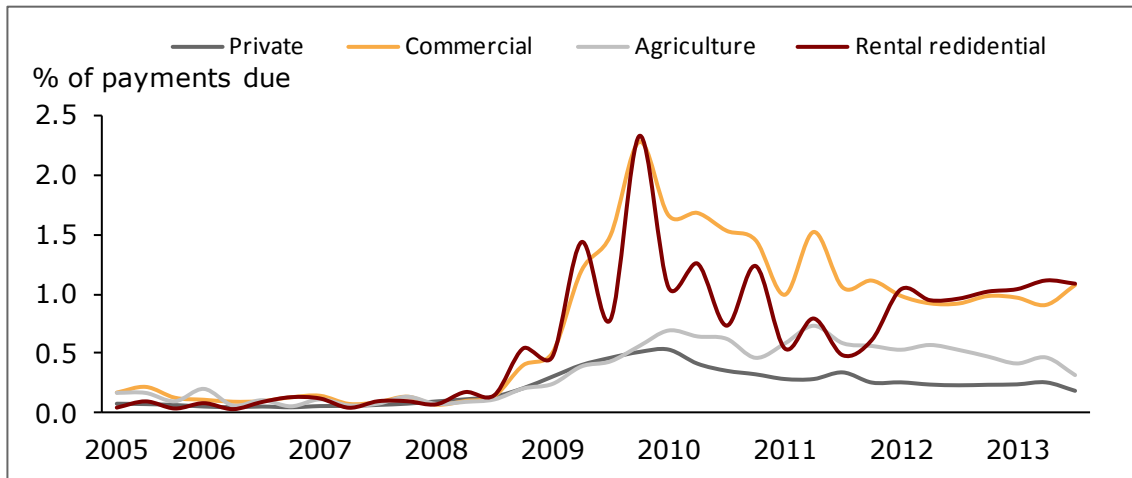
- 25% of all lending in corporate segments is fixed rate to maturity
- More than 74% are either interest reset (typically, rates are reset every year or every third year) or floating rate (base rates are either 6M CIBOR, 3M EURIBOR or 6M CITA)
- Bullets and Interest only loans make up 48% of corporate lending



2 Arrears and Repossessions

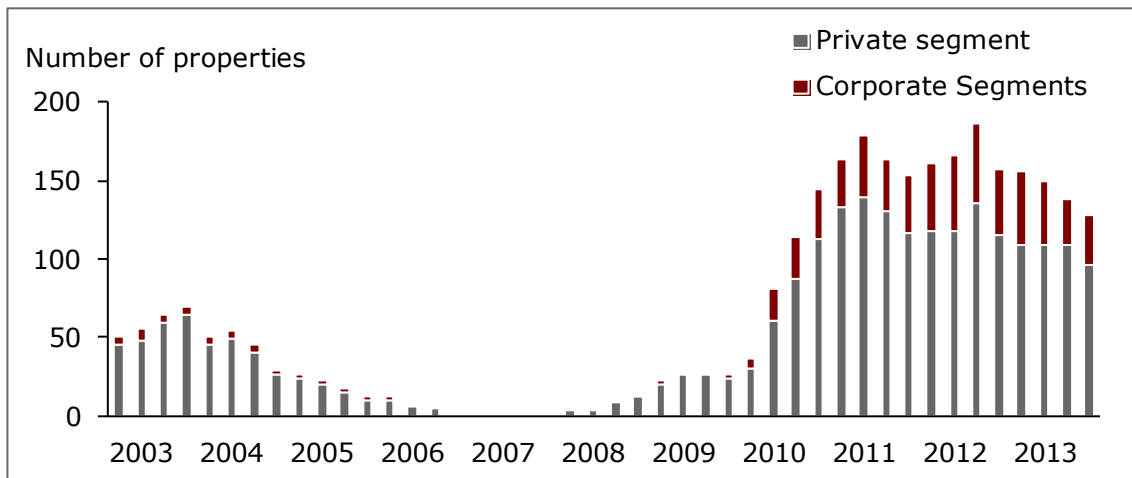
Arrears (3 months)

- Arrears are down considerably from Q4 2009 in Commercial and Rental Residential
- Arrears in the Private segments and Agriculture are stabilising
- Total arrears stood at 0.55% end Q3 2013



Repossessions

- The stock of repossessed properties stood at 128 end Q3 2013 — down 10 from Q2 2013
- This compares to a total stock of mortgages collateral at 506,114

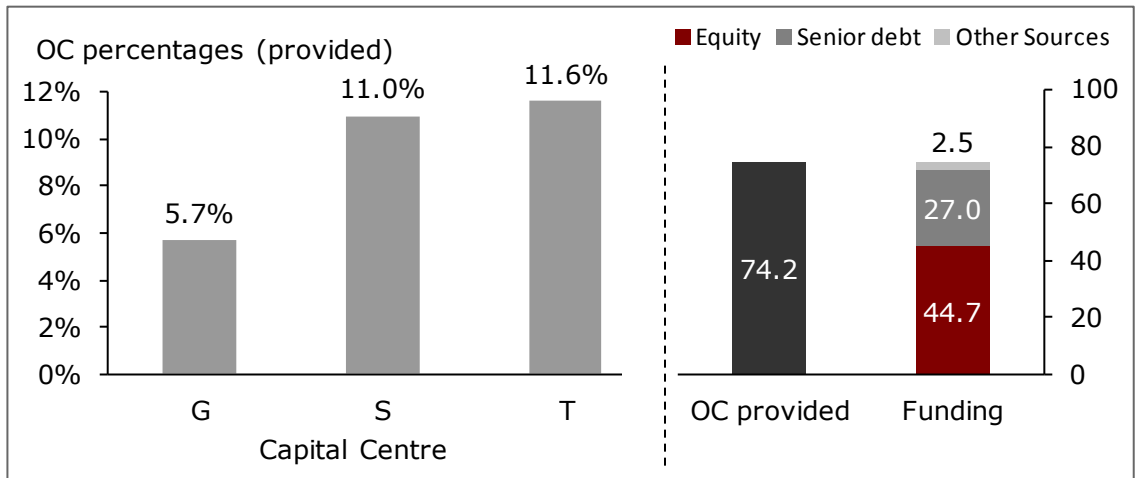


2 Over Collateralization and Capitalization

Over Collateralisation

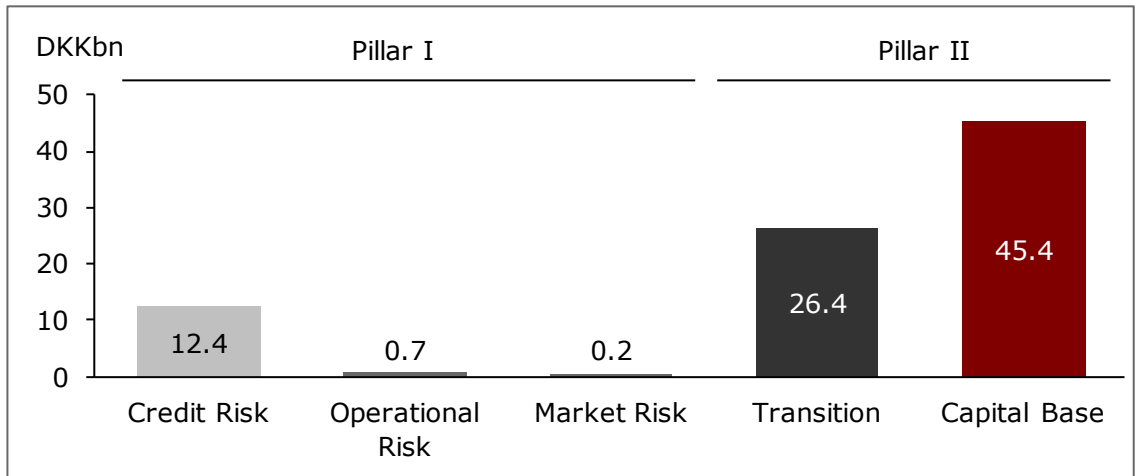
- Covered bonds issued by Realkredit Danmark are secured by mortgage collateral and reserves
- Reserves are invested in government exposures, covered bonds and bank exposures
- In case of bankruptcy Over Collateralisation will also be comprised by bondholders preferential claim

Note: Numbers per 30 September 2013



Capitalisation

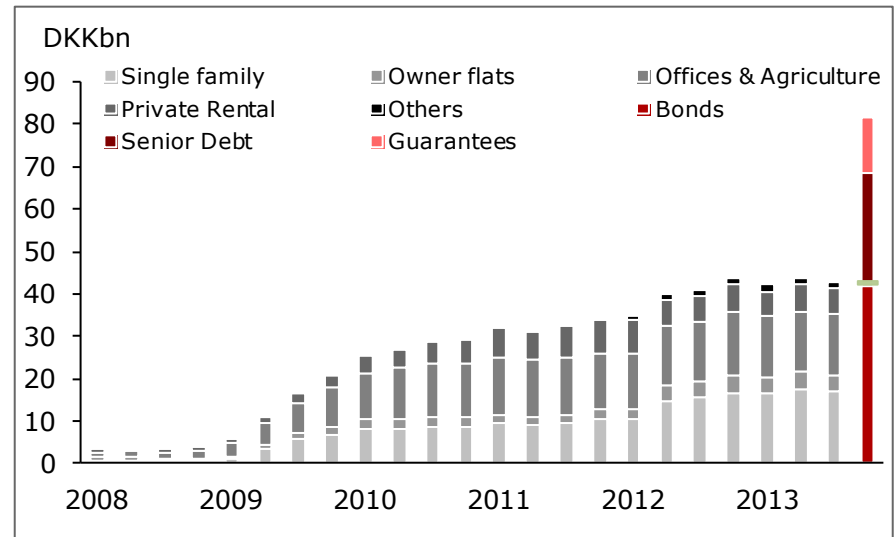
- The solvency ratio stood at 20.4% end Q3 2013 (CRD definition)
- Realkredit Danmark started issuing senior debt in Q1 2012 to strengthen the capital base



Supplementary Collateral — Total in S and T

Buffer in Capital Centres S and T

- End Q3 total OC provided was DKK 68.7bn in Capital Centres S and T of which 27.0bn was Senior debt
- Supplementary Collateral of DKK 43.0bn is required end Q3 2013 in Capital Centres S and T
- Loss Guarantees of DKK 13.1bn are utilised
- Buffer for further growth in need for supplementary Collateral in Capital Centres S and T is DKK 38.8bn
- If the OC is insufficient to comply with Supplementary Collateral requirements, RD can transfer OC from the General Capital Centre or write Loss Guaranties within the 15% limitation of issued bonds



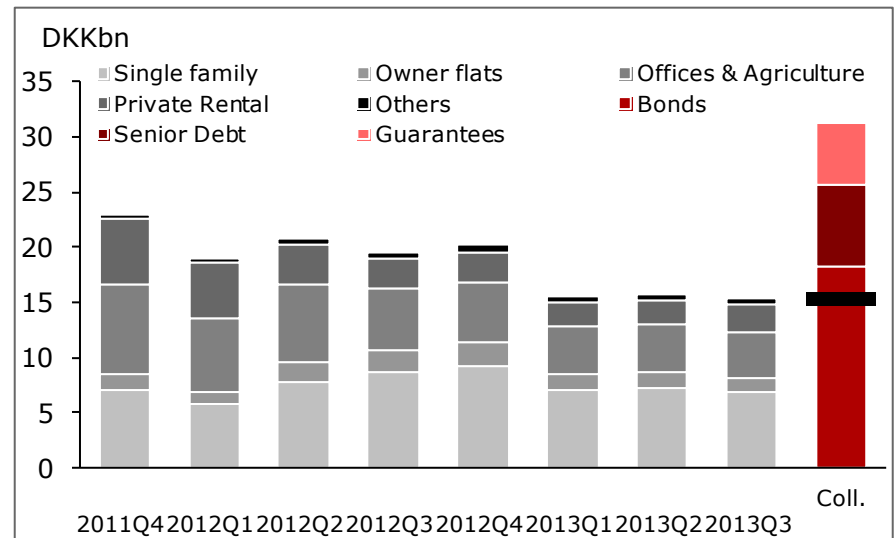
Supplementary Collateral requirements

- If LTV limits are breached during the term of the loan the mortgage loan will only be eligible with the part that comply with the LTV limits. If eligible collateral is insufficient, Supplementary Collateral must be provided
- Increased need for Supplementary Collateral is due to
 - House price deflation
 - Properties selected for supervision
 - Refinancing and remortgaging of loans
 - Increased market value on bonds
- Loss Guaranties and eligible bonds can be used as Supplementary Collateral (bonds which also are used to comply with the solvency requirement) but no other asset types are eligible

Supplementary Collateral — S

Buffer in Capital Centre S

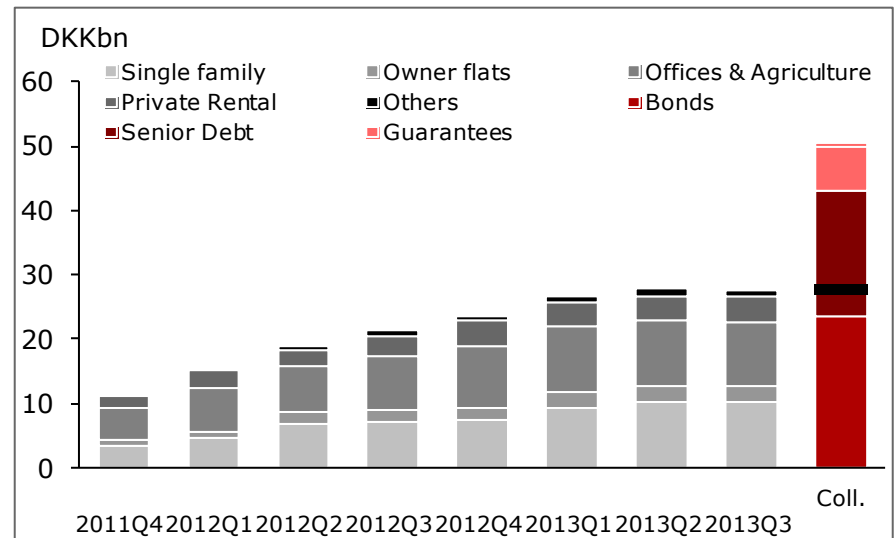
- End Q3 2013 total OC provided was DKK 25.7bn in Capital Centre S of which 7.5bn was Senior debt
- Supplementary Collateral of DKK 15.3bn is required end Q3 2013 in Capital Centre S
- Loss Guarantees of DKK 5.5bn are utilised
- Buffer for further growth in need for supplementary Collateral in Capital Centre S is DKK 15.9bn
- If the OC is insufficient to comply with Supplementary Collateral requirements, RD can transfer OC from the General Capital Centre or Capital Centre T or write Loss Guaranties within the 15% limitation of issued bonds



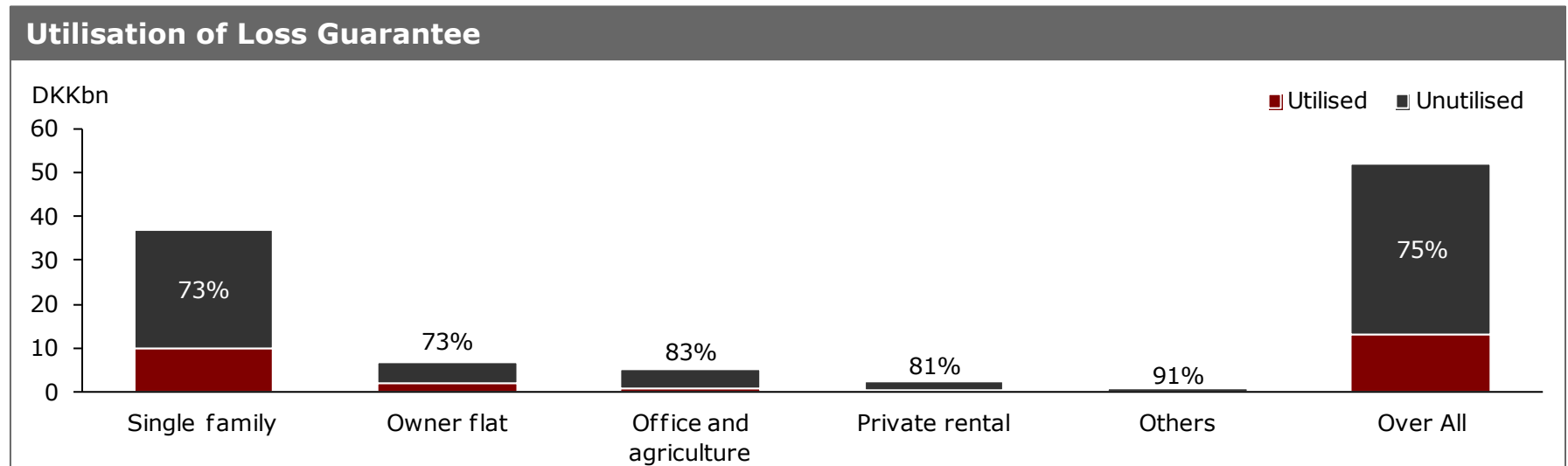
Supplementary Collateral — T

Buffer in Capital Centre T

- End Q3 2013 total OC provided was DKK 43.0bn in Capital Centre T of which 19.5bn was Senior debt
- Supplementary Collateral of DKK 27.7bn is required end Q3 2013 in Capital Centre T
- Loss Guarantees of DKK 7.6bn are utilised
- Buffer for further growth in need for supplementary Collateral in Capital Centre T is DKK 22.9bn
- If the OC is insufficient to comply with Supplementary Collateral requirements, RD can transfer OC from the General Capital Centre or Capital Centre S or write Loss Guaranties within the 15% limitation of issued bonds



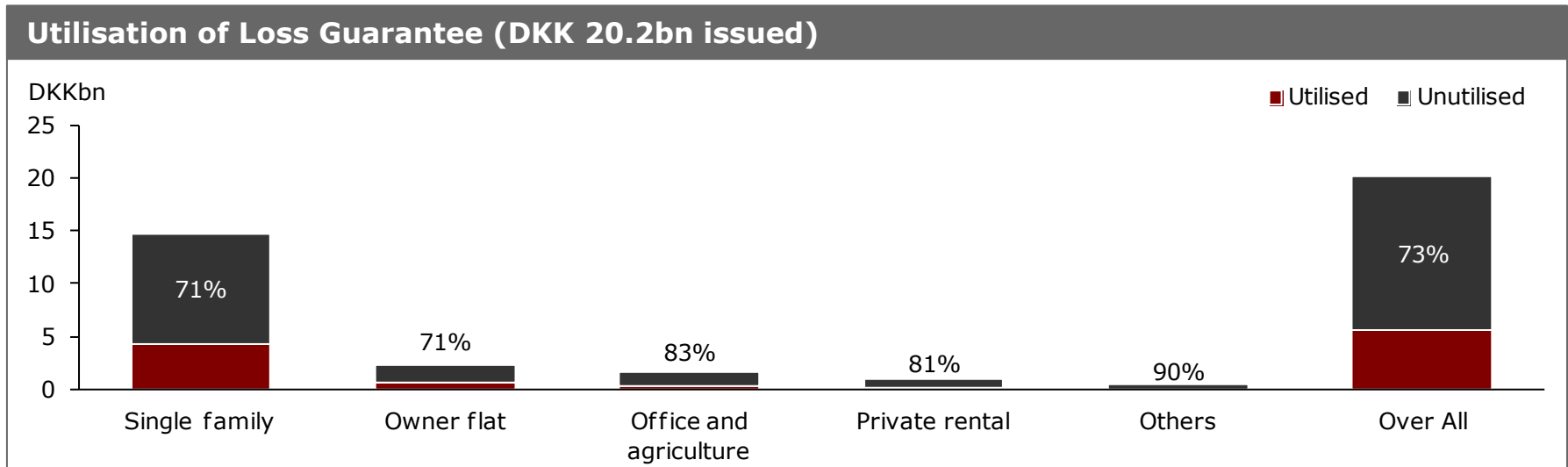
Guarantees — Total



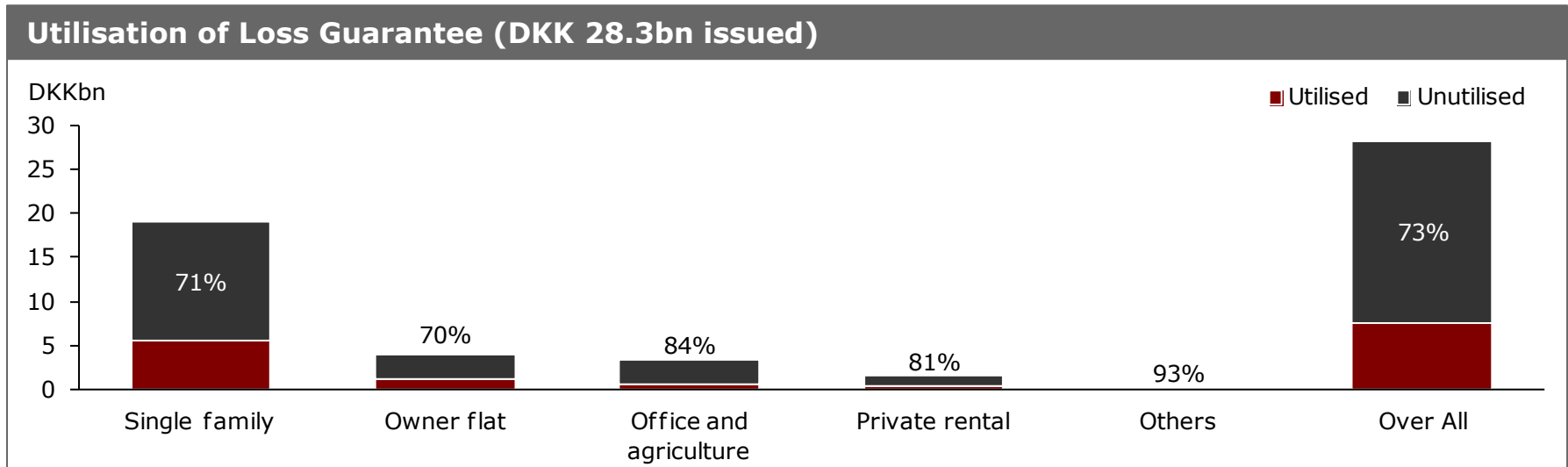
Loss Guarantees issued by Danske Bank (DKK 52.2bn)

- RD loan disbursed through Danske Bank has a Loss Guarantee
- Loss Guarantees covers the outmost LTV limited to 20% of the maximum lending corresponding to LTV from 60–80% for Single Family Housing and 40–60% for Corporate and Holiday Housing
- Maturity of 8 years with an amortization equivalent to the covered loan
- Loss Guarantee covers losses obtained from forced sales including cost

Guarantees — S



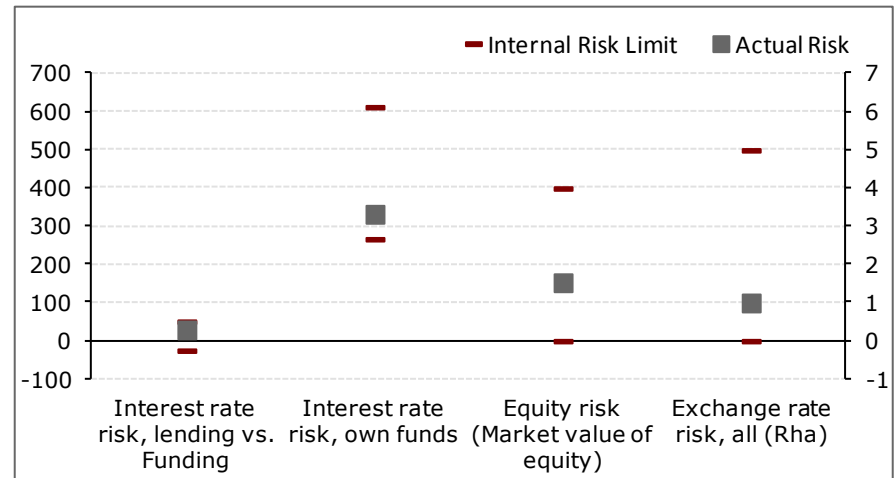
Guarantees — T



2 Market Risk Exposure and Liquidity

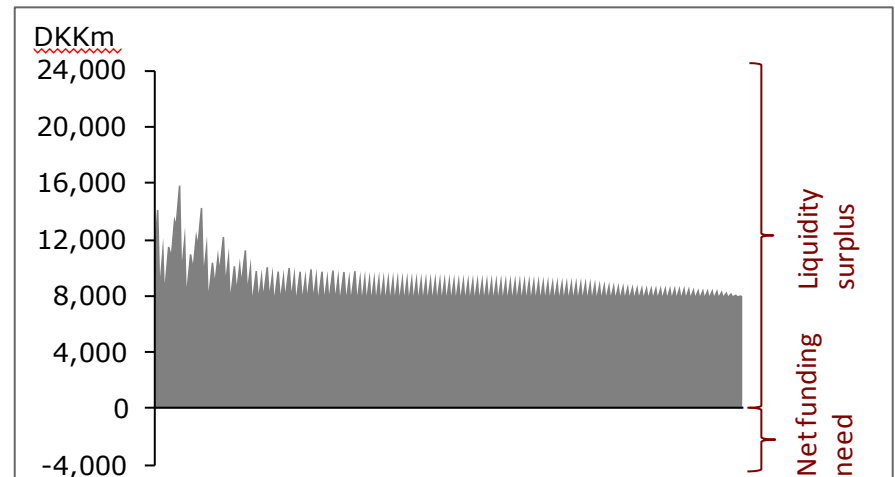
Market Risk Exposures

- Realkredit Danmark operates subject to the specific balance principle
- In adherence with the principle Realkredit Danmark issues covered bonds on a daily basis to match loan origination and employs a pass through structure i.e. bond terms mirror loan terms
- Market risk exposures are, therefore, limited. End Q3 2013 interest rate risk on lending vs. funding stood at DKK 29.4m
- Derivatives are not employed for hedging imbalances on lending and funding



Liquidity

- The pass through structure ensures a net inflow of liquidity from lending vs. Funding, i.e. Realkredit Danmark will not encounter a net funding need
- The liquidity inflow depicted in the chart does not include margin payments



Disclaimer

This publication has been prepared by Realkredit Danmark for information purposes only and should be viewed solely in conjunction with the oral presentation provided by Realkredit Danmark. It is not an offer or solicitation of any offer to purchase or sell any financial instrument. Whilst reasonable care has been taken to ensure that its contents are not untrue or misleading, no representation is made as to its accuracy or completeness and no liability is accepted for any loss arising from reliance on it. Danske Bank, its affiliates or staff, may perform services for, solicit business from, hold long or short positions in, or otherwise be interested in the investments (including derivatives), of any issuer mentioned herein. The Equity and Corporate Bonds analysts are not permitted to invest in securities under coverage in their research sector. This publication is not intended for retail customers in the UK or any person in the US. Realkredit Danmark A/S is a subsidiary company of Danske Bank A/S. Danske Bank A/S is authorised by the Danish Financial Supervisory Authority and subject to limited regulation by the Financial Services Authority (UK). Details on the extent of our regulation by the Financial Services Authority are available from us on request. Copyright (C) Realkredit Danmark A/S. All rights reserved. This publication is protected by copyright and may not be reproduced in whole or in part without permission.