

Risk Report 2016Q3

Published 17 November 2016

Contents

The Risk Report has been prepared by Realkredit Danmark's analysts for information purposes only. Realkredit Danmark will publish an updated Risk Report quarterly.

The Risk Report offers an update on the performance of mortgage collateral supporting mortgage bonds and mortgage covered bonds (covered bonds) issued by Realkredit Danmark.

Contents of the report falls into two parts. The first part contains general market information relevant to the performance of mortgage collateral. The second part contains Realkredit Danmark specific information. Contents of the report are:

1 Key Market Indicators

- House Prices
- Homeowners Equity
- Geographical Dispersion
- Unemployment and Real Wage Growth
- Homeowner Affordability
- Foreclosures
- Danish economic outlook

2 Key Collateral Indicators

- Dispersions Loan to Value Ratios
- Loan to Value Ratios and Borrower Classifications
- Mortgage Collateral Breakdowns — Total, Capital Centre S and Capital Centre T
- Borrower Exposure to Interest Rates
- Arrears and Repossessions
- Over Collateralisation and Capitalisation
- Supplementary Collateral
- Guarantees
- Market Risk Exposures and Liquidity

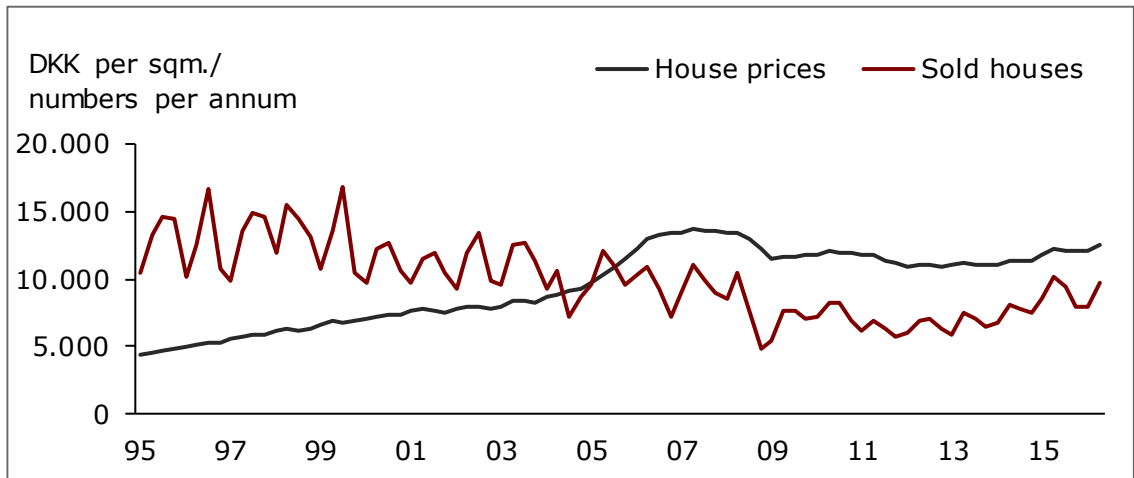
Key Market Indicators

General Market Information

1 House Prices and Homeowners Equity

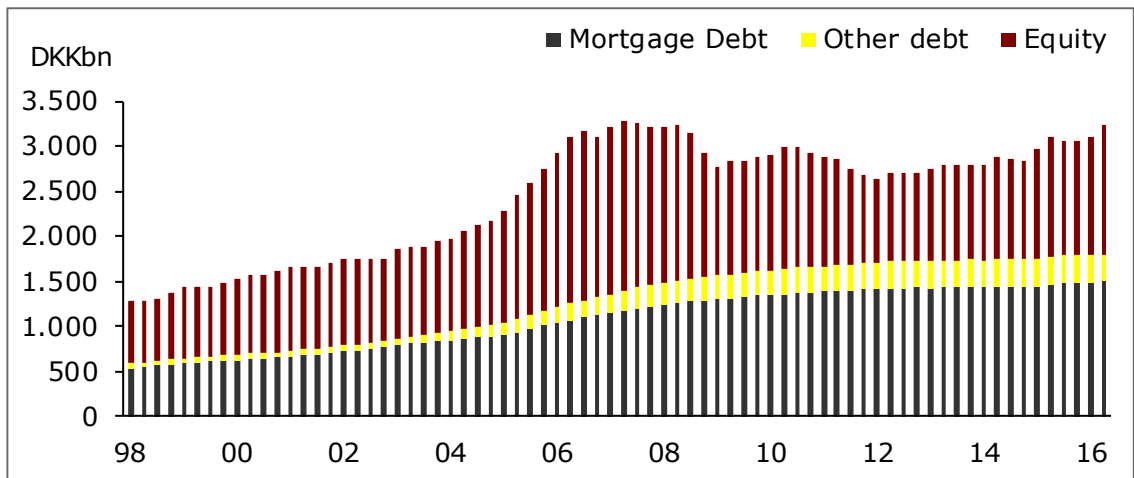
House Price Trends

- House prices on the rise have been driven by historically low interest rates.
- The Danish Central Bank expects an increase in house prices of around 3 per cent per annum from 2016 to 2018
- Number of houses sold is back to more "normal" levels



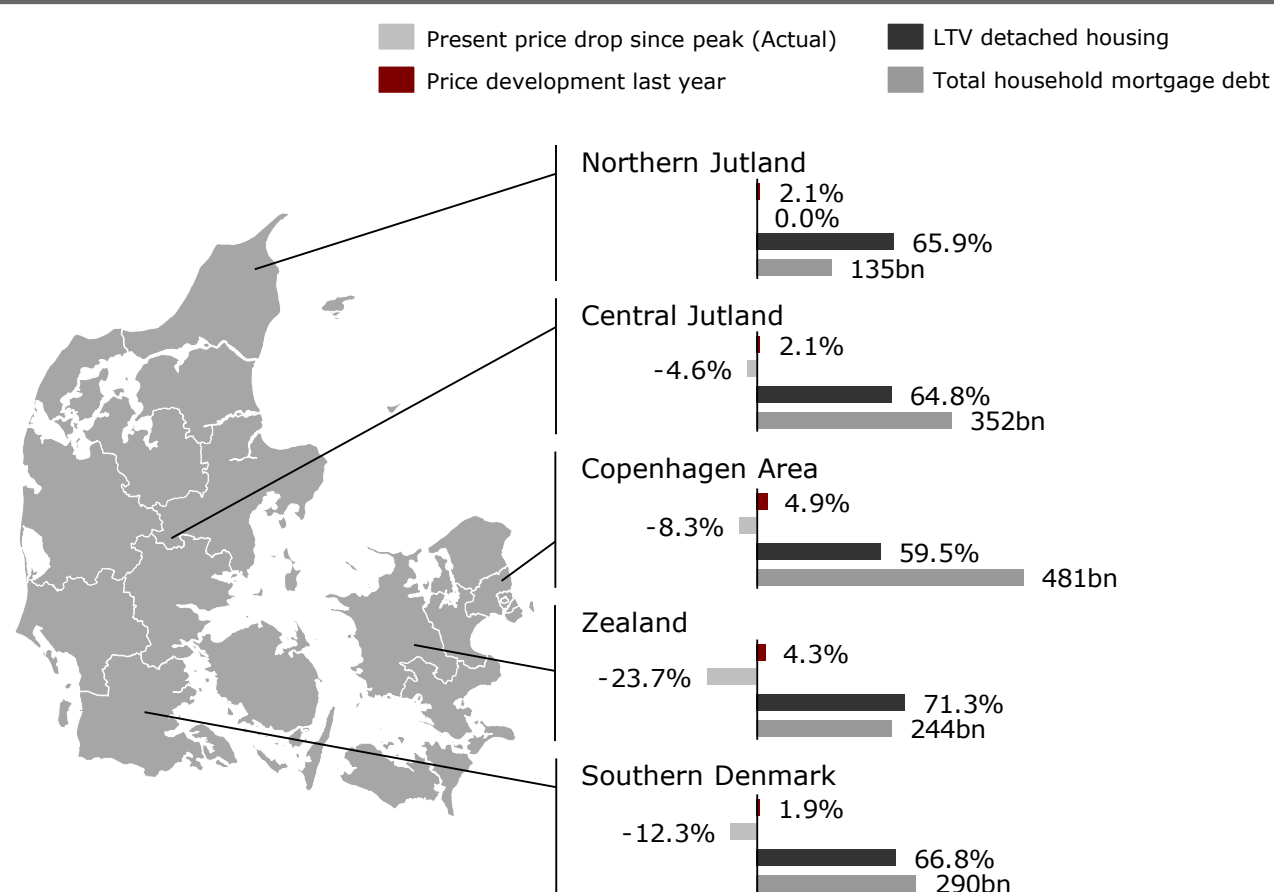
Homeowners Equity

- Homeowners' equity was DKK 1,429bn end 2016Q2
- Since the beginning of 2012 homeowners' equity has risen by DKK 501bn
- In the same period total lending increased by DKK 89bn and thus the total value of the housing stock has increased by DKK 590bn



1 Geographical Dispersion

Private lending in Denmark in total

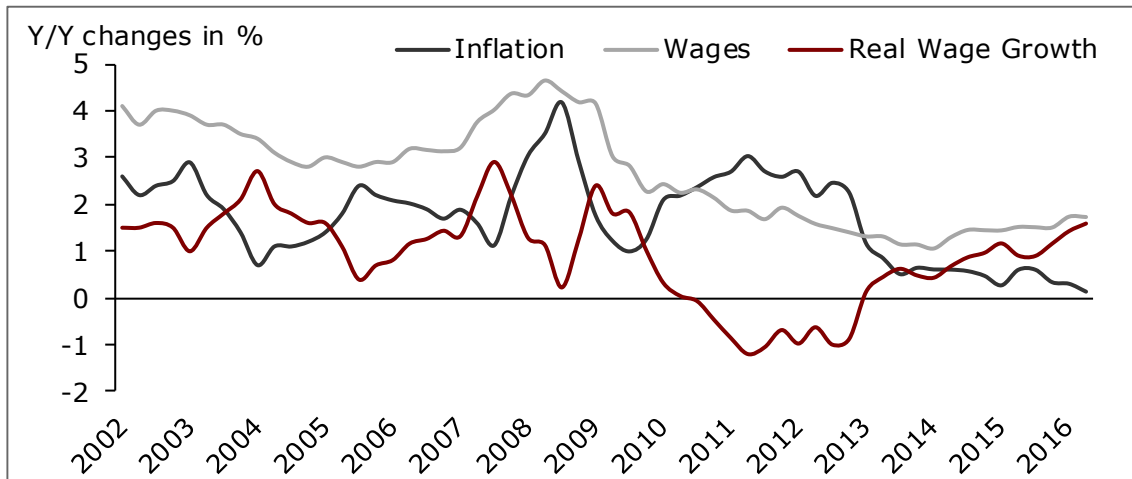


- House prices are generally increasing in all areas of the country – though at a slow pace
- Total mortgage debt in the Copenhagen area is the highest in the country. However, LTV is only 59.5% and house prices are on the rise

1 Unemployment and Real Wage Growth

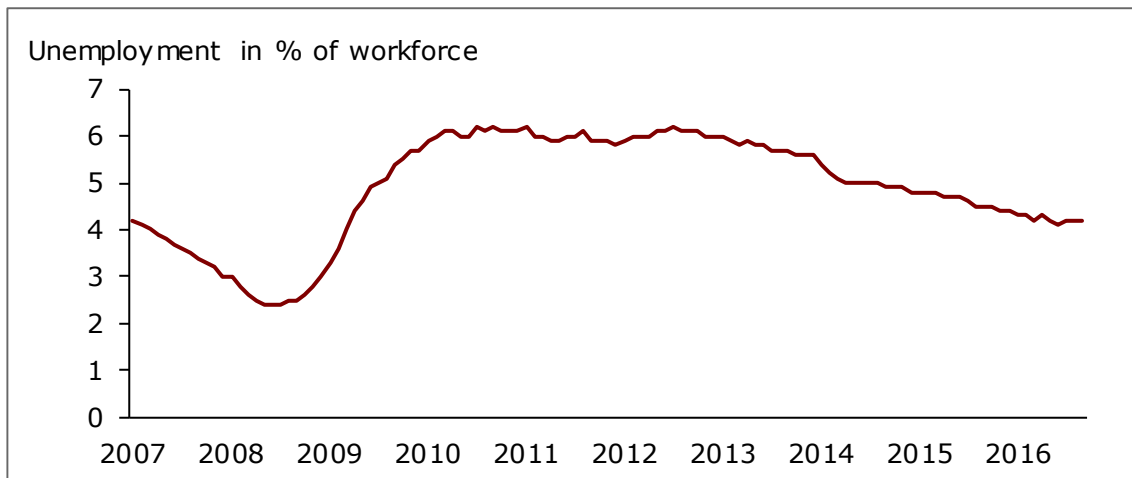
Real Wage Growth

- Real wage growth in Q2 2016 stood at 1.6%.
- Current real wage growth is now above average



Unemployment

- Gross unemployment rate stood at 4.2 per cent end Q3 2016 up from a historical low of 2.4 per cent in mid 2008
- In a historical perspective unemployment is on a low level

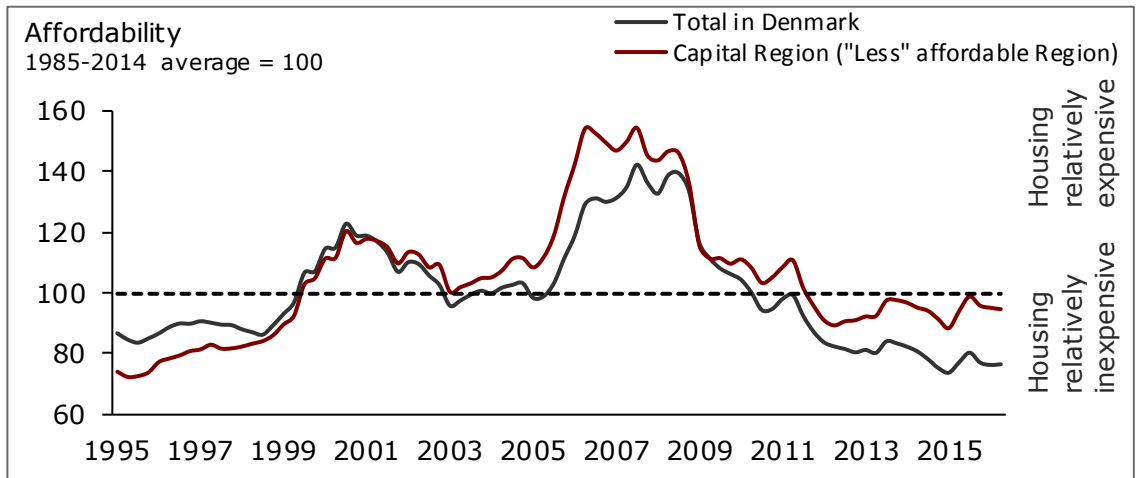


¹: Gross unemployment rate defined as net unemployment plus persons in activation schemes

1 Homeowner Affordability and Foreclosures

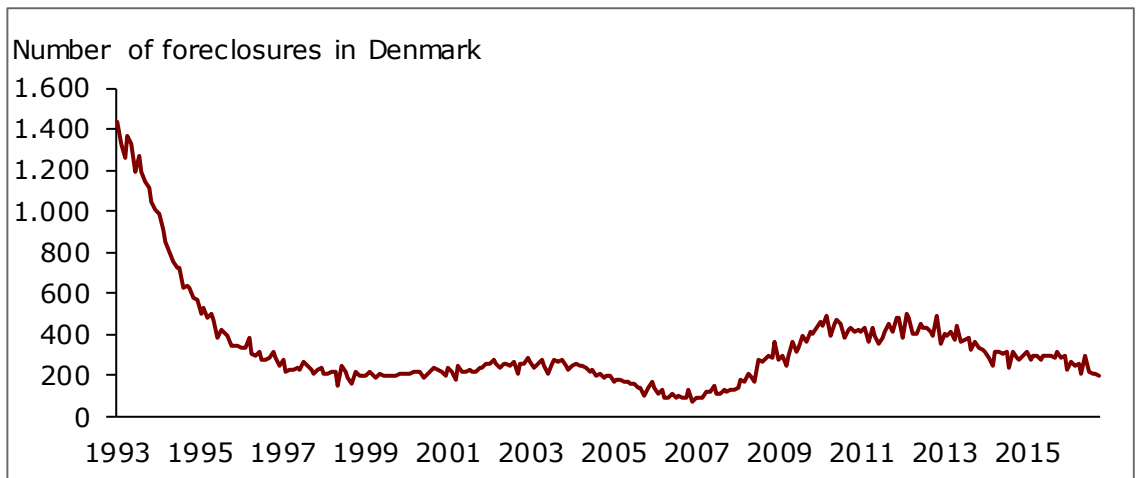
Homeowner Affordability

- Housing remains affordable compared to a 30 year average. However, the Capital region is getting closer to average (index 100)
- Recent house price inflation is off-set by low interest rates
- The likely impact of interest rate hikes would be a downward trend in house prices.



Foreclosures

- The number of foreclosed properties in Denmark in September 2016 was 206
- The number of foreclosures is now back to "normal levels"
- The duration of a foreclosure is approx. 6 months from missed payments to completion



1 Political measures and outlook

Denmark ■ Euro Zone ■	2015		2016		2017	
GDP	1.0	1.9	1.1	1.5	1.7	1.1
Private Consumption	2.3	1.8	1.6	1.4	1.7	0.9
Fixed investments	1.1	2.9	1.0	2.7	2.9	1.1
Export	0.3	6.2	0.6	2.5	2.8	3.3
Unemployment %	4.6	10.9	4.2	10.1	4.0	9.9

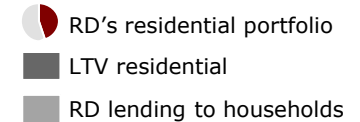
Danish Economy Outlook

- The growth in the Danish and European economy is expected to be 1.1 per cent and 1.5 per cent, respectively, in 2016
- Interest rates are a key element in the household economy
- In 2015, Denmark was introduced to negative interest rates
- Certificates of deposit rate currently stands at -0.65% p.a.
- We expect very low interest rates in the near future

Key Collateral Indicators

Realkredit Danmark Specific Information

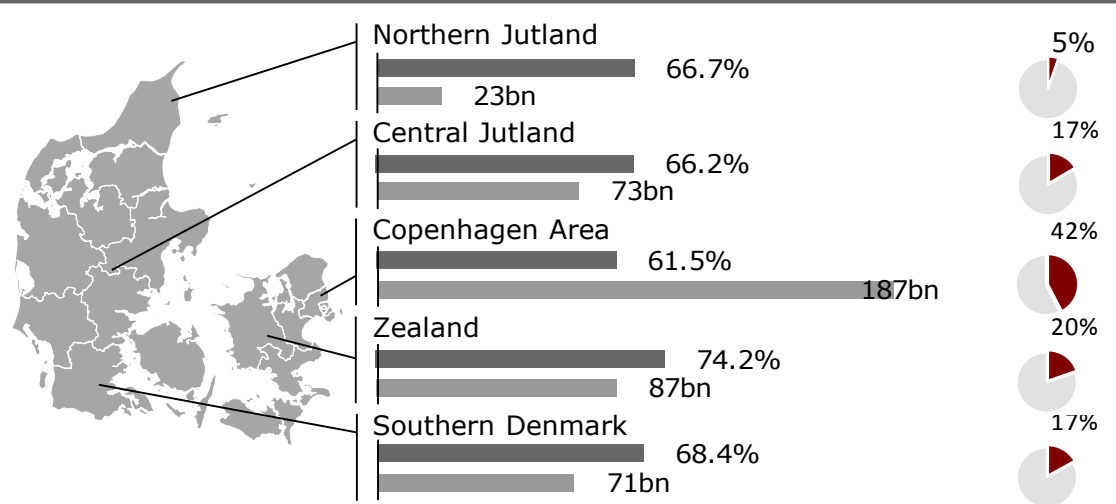
2 Dispersion and Loan to Value Ratios



Dispersion of RD's residential portfolio

- RD's loan portfolio is concentrated in the Copenhagen area and on Zealand where prices were reduced the most during the recent crisis
- Homeowner equity remains highest in the Copenhagen area which also is the region with the smallest LTV
- The affordability ratio in the capital region is rising and is now getting close to index 100

Geographical Dispersion in Realkredit Danmark



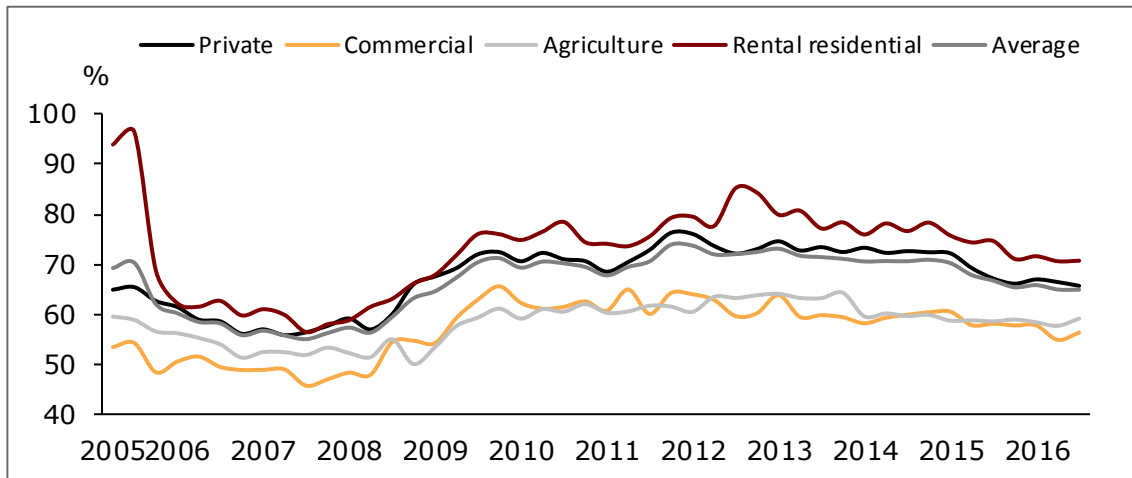
Loan To Value Ratios

- Covered bonds are secured by a first claim on the mortgage collateral and the reserves of the issuer
- LTV ratios of the mortgage collateral are maximised by legislation at 80% in residential segments and 60% in commercial segments (70% if the outmost 10% are secured by additional collateral). Lending beyond these limits is prohibited
- LTV ratios are monitored on an ongoing basis based on current market values of the property and current prepayment value of the mortgages
- 37% of mortgage collateral securing covered bonds issued by Realkredit Danmark has a current LTV ratio of 20% or less. More than 67% has a current loan to value ratio lower than 40%
- Foreclosure costs are typically less than 15% of the outstanding loan balance

2 Loan To Value and Borrower Classifications

Loan to Value

- Average loan to value ratios across market segments are 65% in Q3 2016 compared to 67% in Q3 2015
- LTV's for Commercial and Agriculture are based on few observations to confirm correct price levels



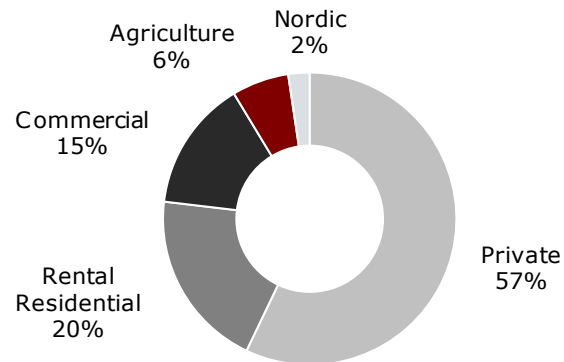
Borrower Classifications

- Borrowers' financial strength is classified on a scale from 1 to 11, 1 being the highest score
- Approx. 5bn of total lending is secured by mortgages above the 80% LTV limit for which the borrowers' financial strength is classified 8-11 — equivalent to 1% of the portfolio

DKKbn	Rating Category (Scaled 1-11)			
	1-3	4-7	8-11	Total
LTV				
0-20 %	68	202	16	286
20-40 %	45	171	15	231
40-60 %	27	119	13	158
60-80 %	11	51	8	69
> 80 %	6	15	5	27
Total	157	558	57	772

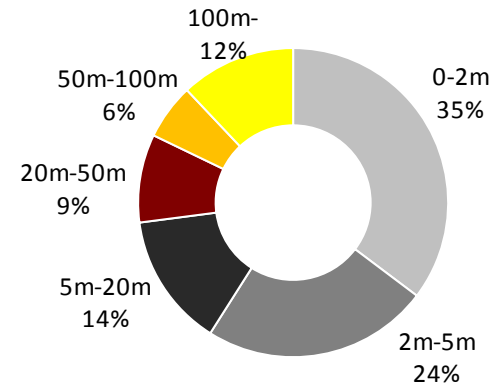
2 Collateral Breakdowns — Total portfolio

Borrower Segmentation



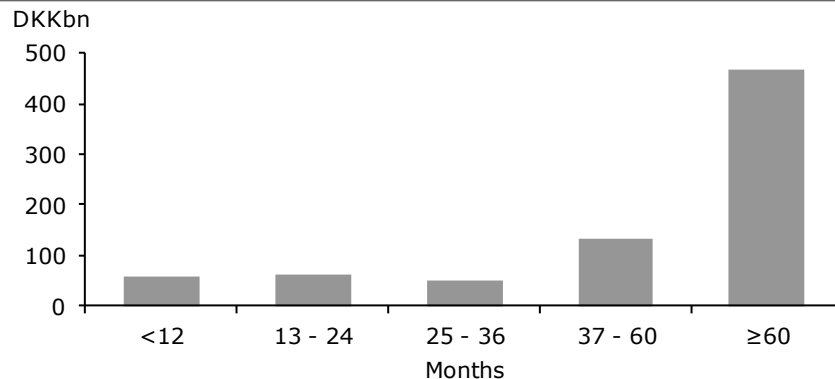
Note: Total lending distributed on segments

Outstanding Loan Balance



Note: Total lending distributed on outstanding loan balances

Portfolio Seasoning *defined by duration of customer relationship*



Note: new definition of seasoning compared to previous risk reports

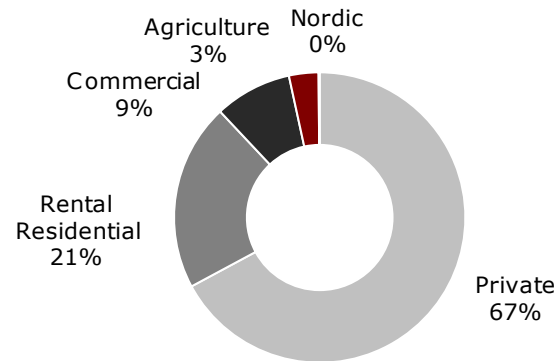
Outstanding Debt in DKKbn by LTV ratio

Segment	0-20%	20-40%	40-60%	60-80%	>80%	Total DKKbn
Private	155	132	95	46	13	441
Commercial	50	41	26	7	3	127
Agriculture	19	16	10	3	1	49
Rental Residential	63	42	27	14	10	156
Weighted dist.	37%	30%	21%	9%	3%	100%
Total, DKKbn	286	231	158	69	27	772

Average LTV: 65.0%

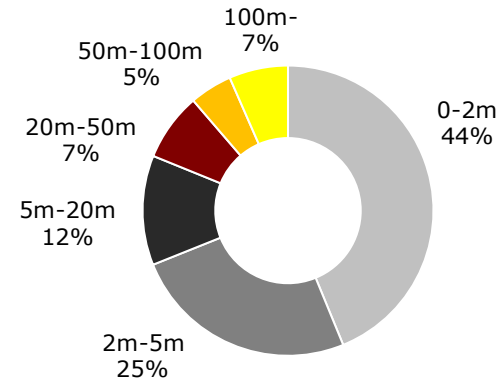
2 Collateral Breakdowns — Capital Centre S

Borrower Segmentation



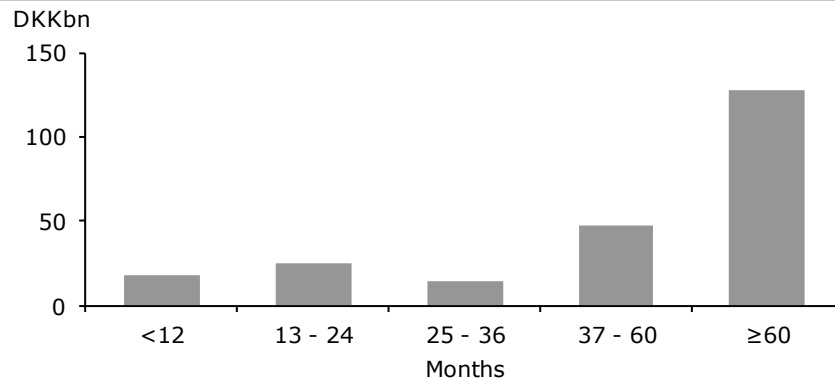
Note: Total lending distributed on segments

Outstanding Loan Balance



Note: Total lending distributed on outstanding loan balances

Portfolio Seasoning *defined by duration of customer relationship*



Note: new definition of seasoning compared to previous risk reports

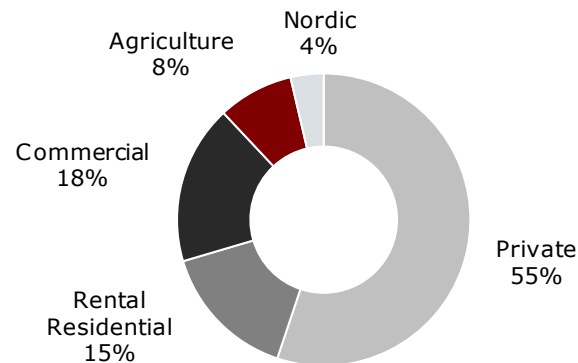
Outstanding Debt in DKKbn by LTV ratio

Segment	0-20%	20-40%	40-60%	60-80%	>80%	Total DKKbn
Private	53	47	34	17	4	156
Commercial	7	6	5	1	1	20
Agriculture	3	3	2	1	0	8
Rental Residential	23	13	7	3	3	49
Weighted dist.	37%	30%	21%	9%	3%	100%
Total, DKKbn	86	69	48	22	8	232

Average LTV: 62.6%

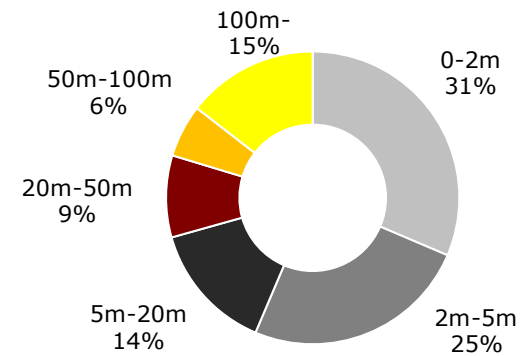
2 Collateral Breakdowns — Capital Centre T

Borrower Segmentation



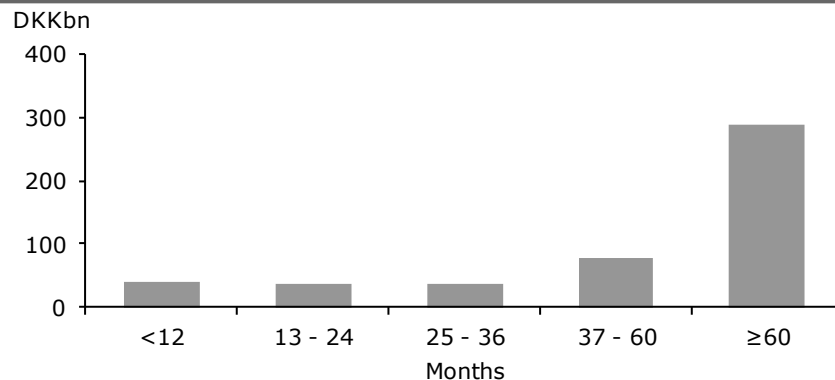
Note: Total lending distributed on segments

Outstanding Loan Balance



Note: Total lending distributed on outstanding loan balances

Portfolio Seasoning *defined by duration of customer relationship*



Note: new definition of seasoning compared to previous risk reports

Outstanding Debt in DKKbn by LTV ratio

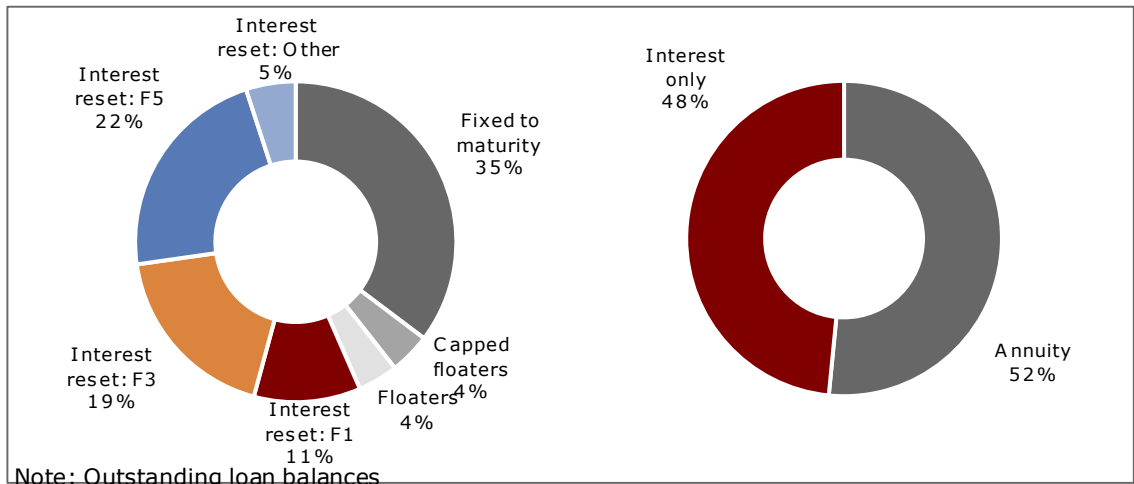
Segment	0-20%	20-40%	40-60%	60-80%	>80%	Total DKKbn
Private	91	79	57	28	8	263
Commercial	41	33	19	4	2	99
Agriculture	15	13	8	3	1	40
Rental Residential	27	22	15	7	4	76
Weighted dist.	37%	31%	21%	9%	3%	100%
Total, DKKbn	175	146	100	42	14	477

Average LTV: 63.4%

2 Borrower Exposure to Interest Rates

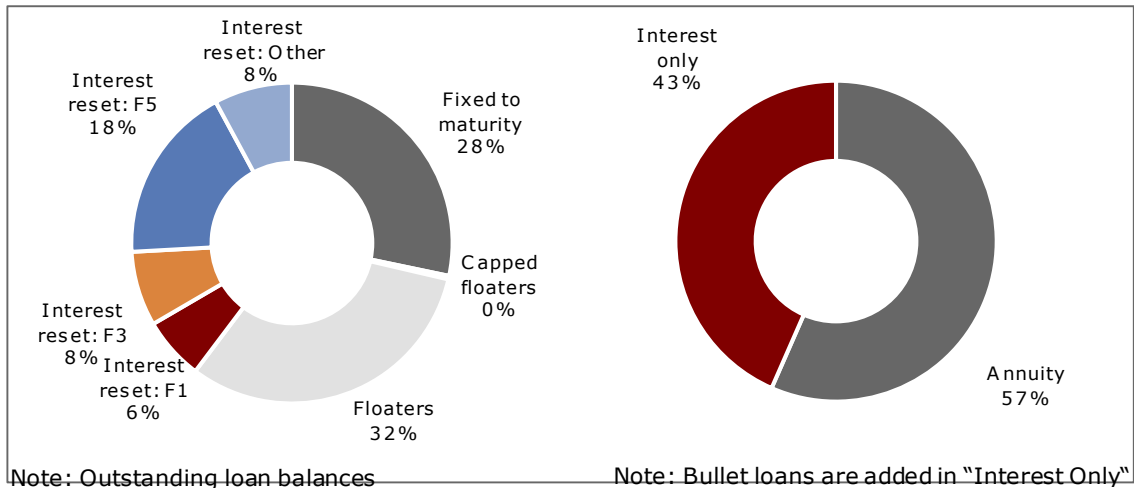
Private Segment

- Homeowners must be able to service a 30-year fixed rate annuity loan for Realkredit Danmark to underwrite
- Originally, fixed rate mortgages were standard in the Danish market, but now interest reset accounts for 57%
- Expectations are for this percentage to decline since 30Y fixed rates are now only 2.5% and FlexKort® (floater) is offered as an alternative to interest reset loans
- Negative interest rates has been a reality for F1 to F3 – and some floaters' floor of 0% p.a. is now effective



Corporate Segments

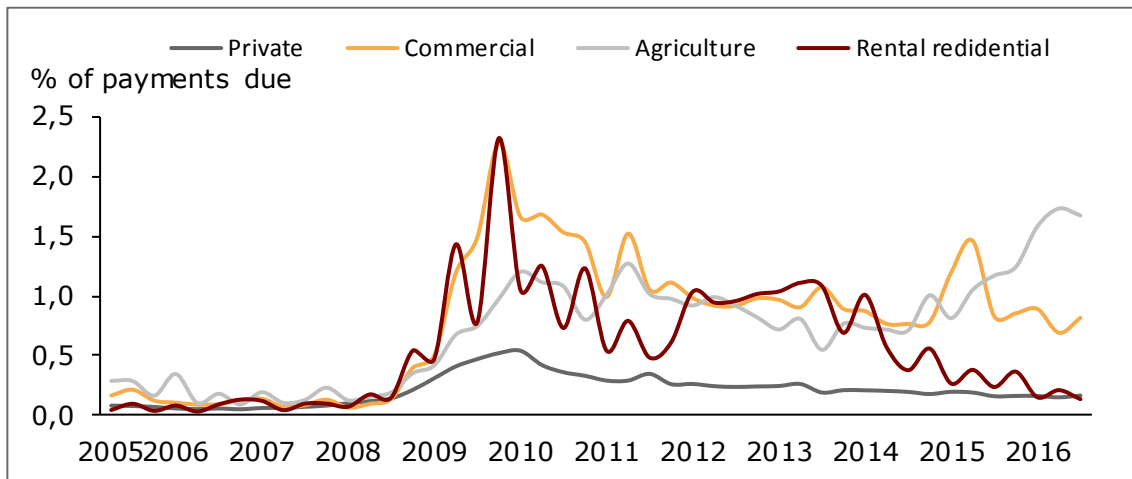
- 28% of all lending in corporate segments is fixed rate to maturity
- 72% are either interest reset (typically, rates are reset every 1, 3 or 5 years) or floating rate (base rates are either 6M CIBOR, 3M EURIBOR or 6M CITA)
- Bullets and Interest only loans make up 43% of corporate lending



2 Arrears and Repossessions

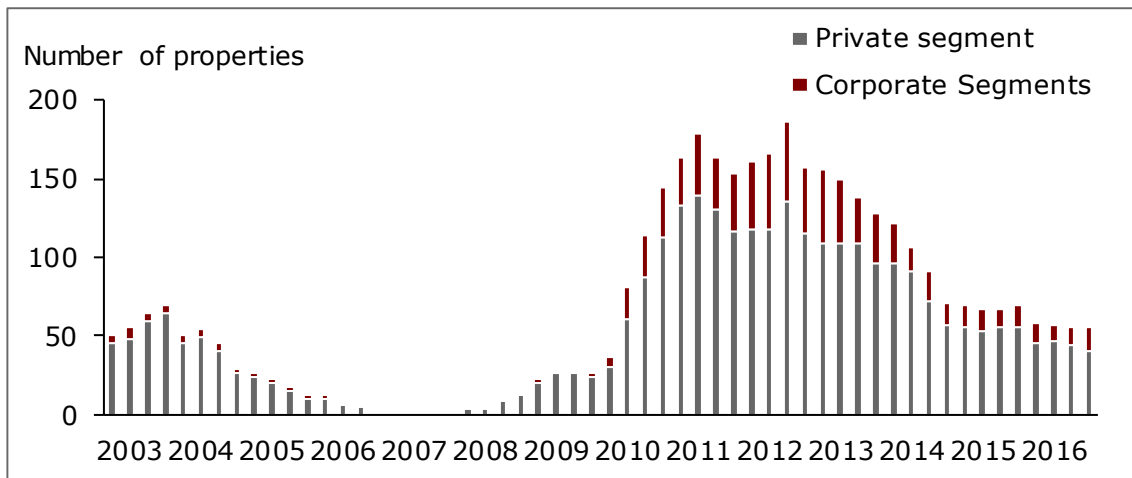
Arrears (3 months)

- Total arrears stood at 0.32% end Q3 2016
- Arrears are rather volatile in the Rental residential segment. However, arrears are down considerably from Q4 2009
- Arrears in the Commercial segment is now 0.82%. The peak in Q2 2015 was due to a few individual loans
- Arrears in agriculture has increased during the last year -1.67% in Q3 2016
- The Private segment has been rather stable around a level below 0.15%



Repossessions

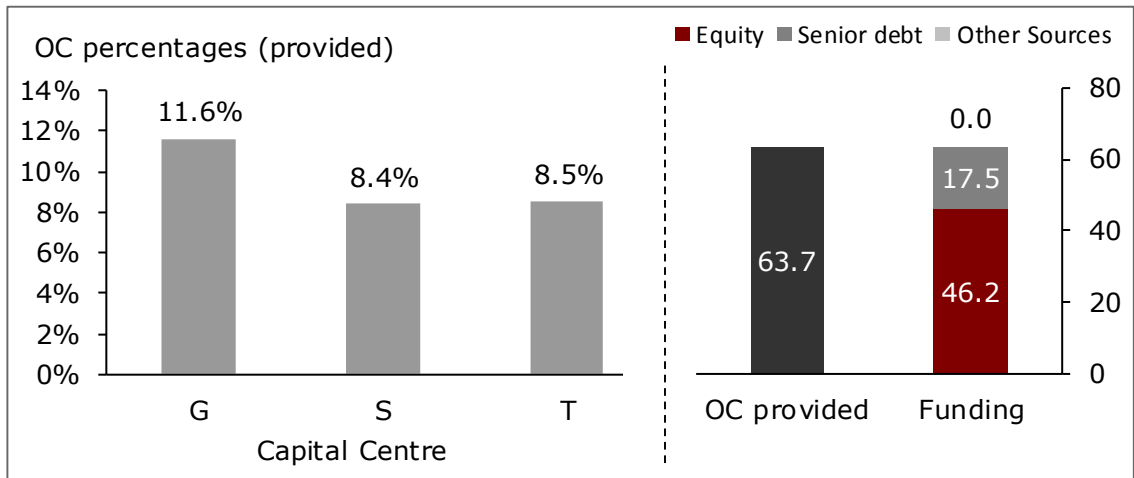
- The stock of repossessed properties stood at 56 end Q3 2016 — status quo since Q2 2016
- This compares to a total stock of mortgage collateral of 479,197



2 Over Collateralization and Capitalization

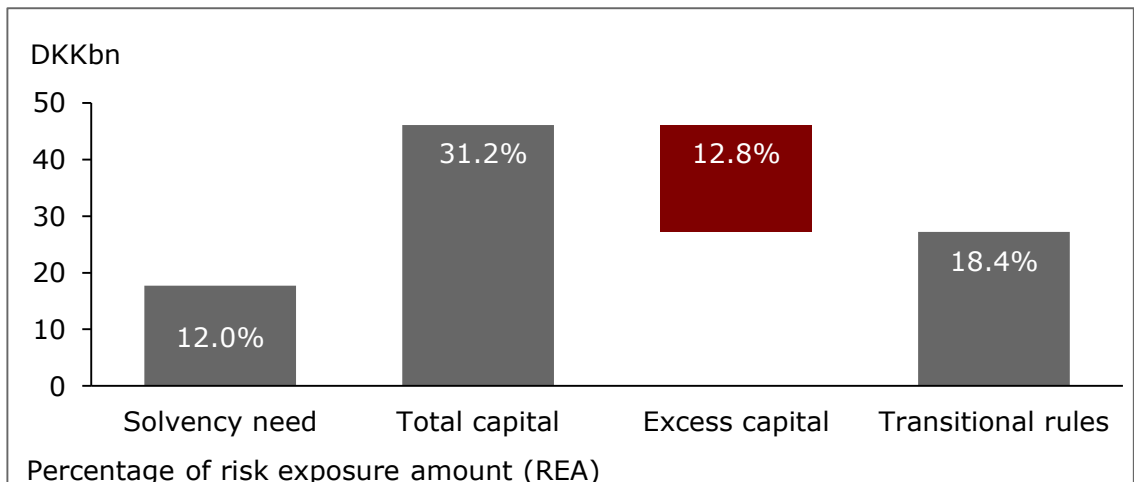
Over Collateralisation

- Covered bonds issued by Realkredit Danmark are secured by mortgage collateral and reserves
- Reserves are invested in government exposures, covered bonds and bank exposures
- In case of bankruptcy Over Collateralisation will also be comprised by bondholders preferential claim



Capitalisation

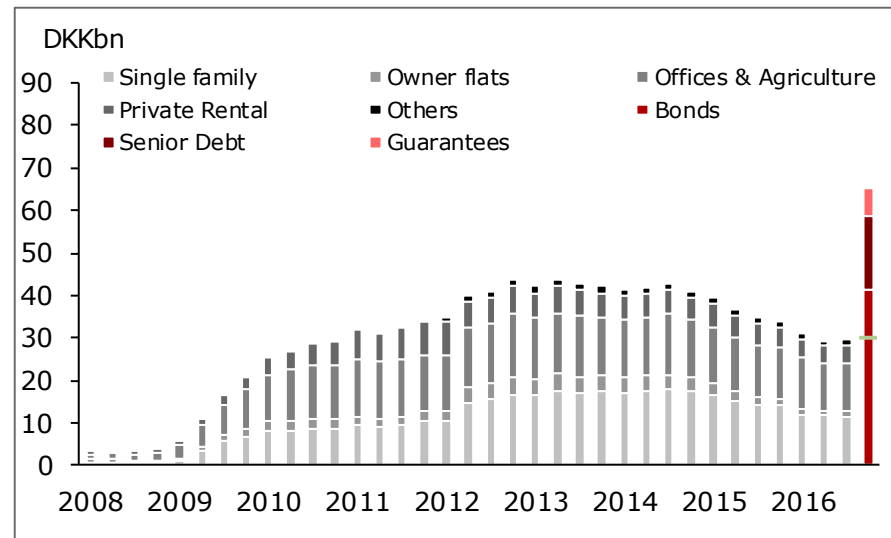
- End Q3 2016, Realkredit Danmark's solvency need was calculated at 17.7bn
- Calculated on the basis of the transitional rules, the capital need was 27.2bn
- With total capital of 46.1bn, Realkredit Danmark had 18.9bn in excess of the requirement according to the transitional rules



Supplementary Collateral — Total in S and T

Buffer in Capital Centres S and T

- End Q3 total OC provided was DKK 58.7bn in Capital Centres S and T of which 17.5bn was funded by Senior debt
- Supplementary Collateral of DKK 29.7bn is required end Q3 2016 in Capital Centres S and T
- Loss Guarantees of DKK 6.4bn are utilised
- Buffer for further growth in need for supplementary Collateral in Capital Centres S and T is DKK 35.5bn
- If the OC is insufficient to comply with Supplementary Collateral requirements, RD can transfer OC from the General Capital Centre or write Loss Guaranties within the 15% limitation of issued bonds



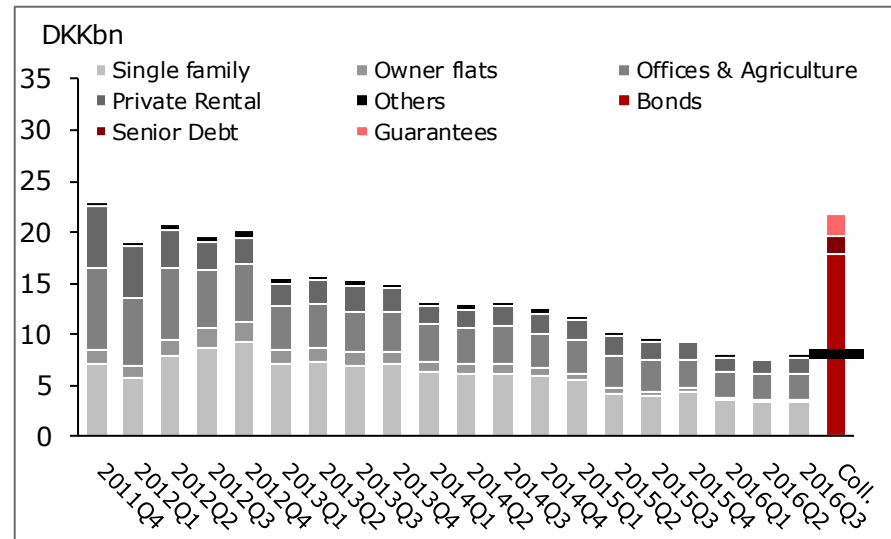
Supplementary Collateral requirements

- If LTV limits are breached during the term of the loan the mortgage loan will only be eligible with the part that comply with the LTV limits. If eligible collateral is insufficient, Supplementary Collateral must be provided
- Increased need for Supplementary Collateral is due to
 - House price deflation
 - Properties selected for supervision
 - Refinancing and remortgaging of loans
 - Increased market value on bonds
- Loss Guaranties and eligible bonds can be used as Supplementary Collateral (bonds which also are used to comply with the solvency requirement) but no other asset types are eligible

Supplementary Collateral — S

Buffer in Capital Centre S

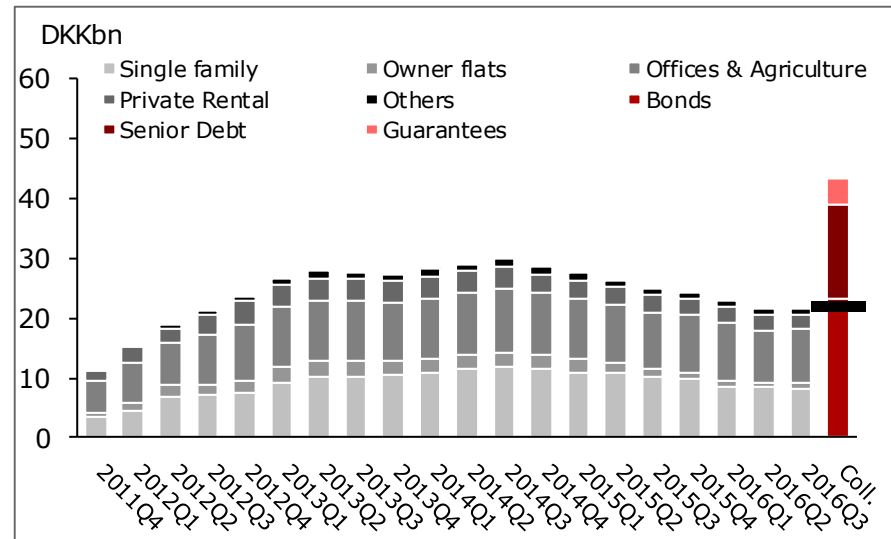
- End Q3 2016 total OC provided was DKK 19.6bn in Capital Centre S of which 1.8bn was funded by Senior debt
- Supplementary Collateral of DKK 8.0bn is required end Q3 2016 in Capital Centre S
- Loss Guarantees of DKK 2.2bn are utilised
- Buffer for further growth in need for supplementary Collateral in Capital Centre S is DKK 13.8bn
- If the OC is insufficient to comply with Supplementary Collateral requirements, RD can transfer OC from the General Capital Centre or Capital Centre T or write Loss Guaranties within the 15% limitation of issued bonds



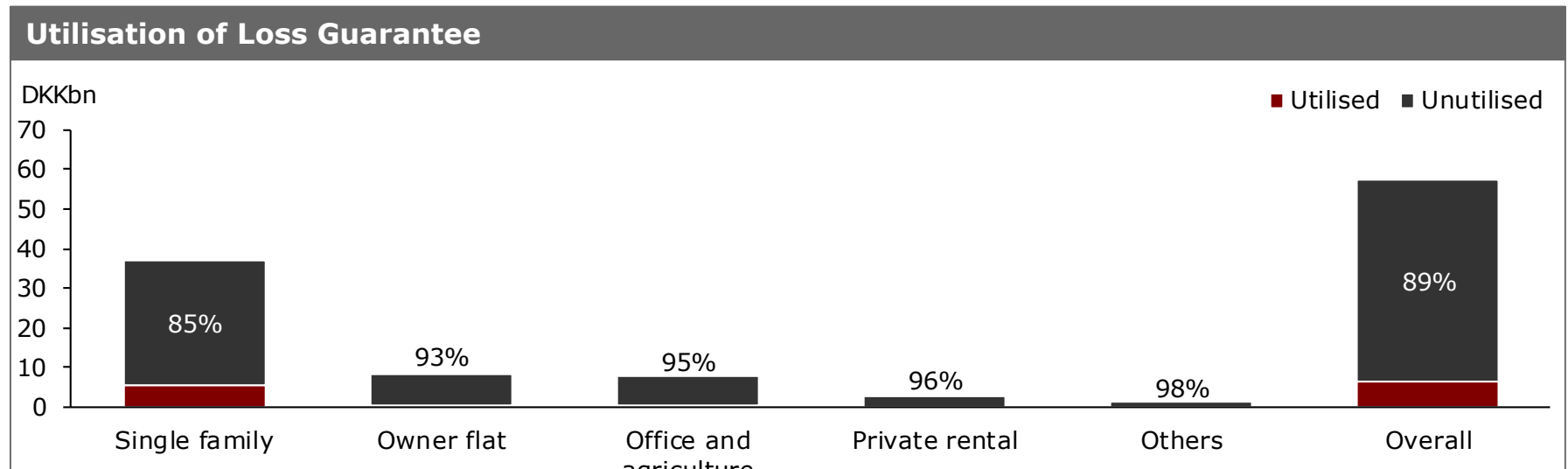
Supplementary Collateral — T

Buffer in Capital Centre T

- End Q3 2016 total OC provided was DKK 39.1bn in Capital Centre T of which 15.7bn was funded by Senior debt
- Supplementary Collateral of DKK 21.6bn is required end Q3 2016 in Capital Centre T
- Loss Guarantees of DKK 4.2bn are utilised
- Buffer for further growth in need for supplementary Collateral in Capital Centre T is DKK 21.7bn
- If the OC is insufficient to comply with Supplementary Collateral requirements, RD can transfer OC from the General Capital Centre or Capital Centre S or write Loss Guaranties within the 15% limitation of issued bonds



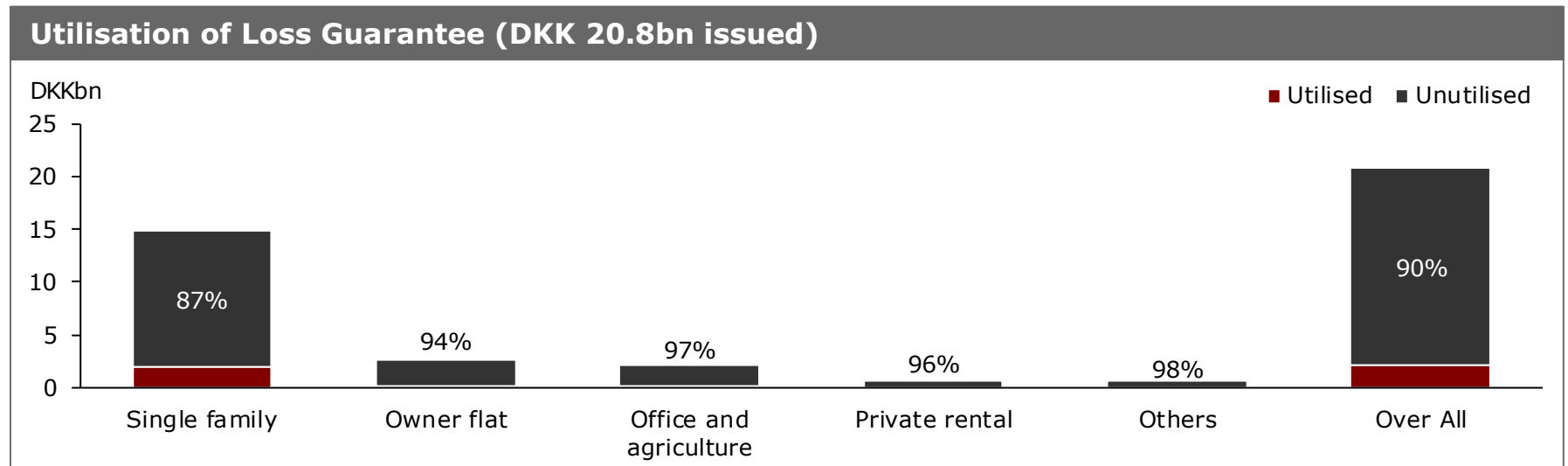
Guarantees — Total



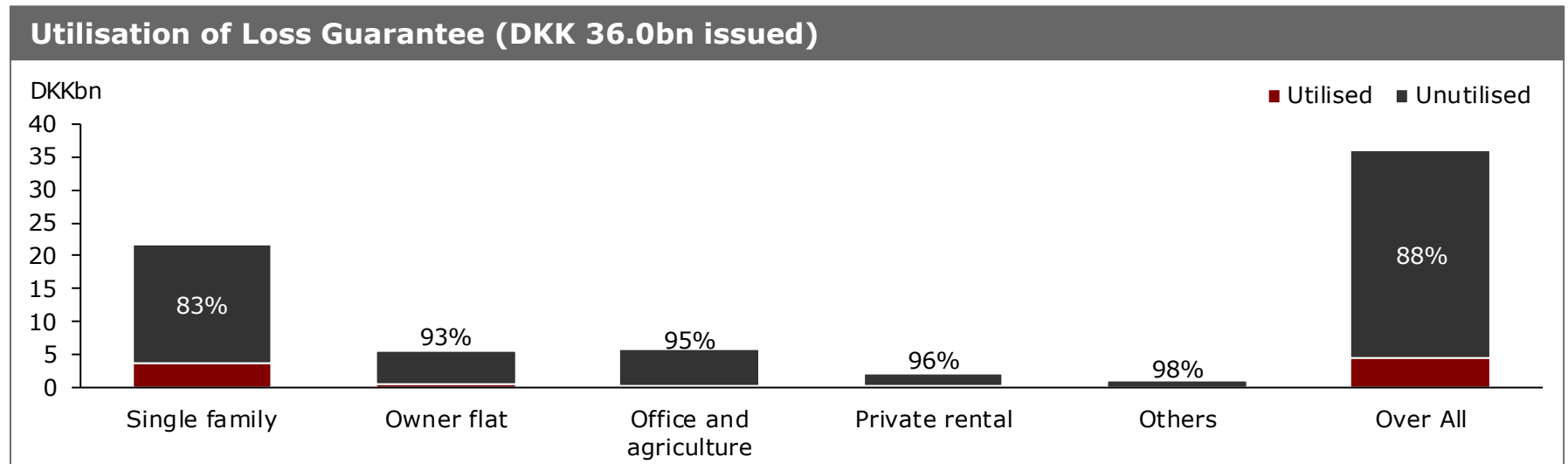
Loss Guarantees issued by Danske Bank (DKK 57.6bn)

- RD loans disbursed through Danske Bank has a Loss Guarantee
- Loss Guarantees covers the outmost LTV limited to 20% of the maximum lending corresponding to LTV from 60–80% for Single Family Housing and 40–60% for Corporate and Holiday Housing
- Maturity of 8 years with an amortization equivalent to the covered loan
- Loss Guarantee covers losses obtained from forced sales including costs

Guarantees — S



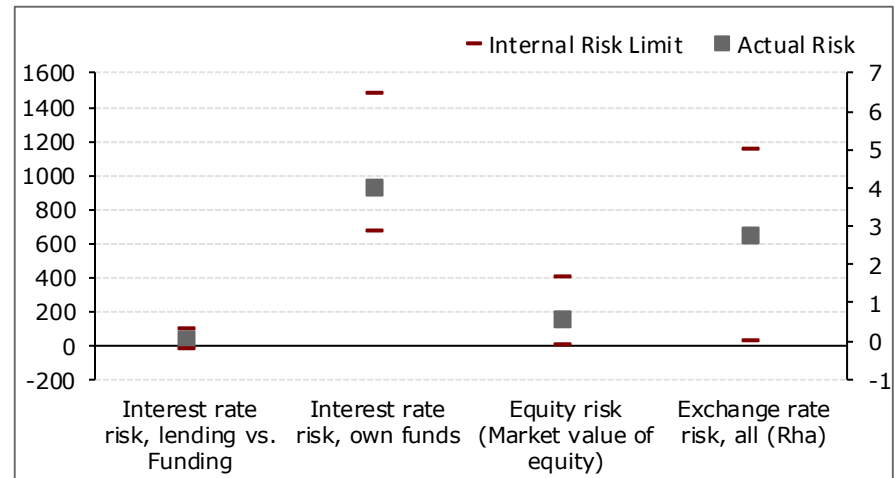
Guarantees — T



2 Market Risk Exposure and Liquidity

Market Risk Exposures

- Realkredit Danmark operates subject to the specific balance principle
- In adherence with the principle Realkredit Danmark issues covered bonds on a daily basis to match loan origination and employs a pass through structure i.e. bond terms mirror loan terms
- Market risk exposures are, therefore, limited. End Q3 2016 interest rate risk on lending vs. funding stood at DKK 20.2m
- Derivatives are not employed for hedging imbalances on lending and funding



Disclaimer

This publication has been prepared by Realkredit Danmark for information purposes only and should be viewed solely in conjunction with the oral presentation provided by Realkredit Danmark. It is not an offer or solicitation of any offer to purchase or sell any financial instrument. Whilst reasonable care has been taken to ensure that its contents are not untrue or misleading, no representation is made as to its accuracy or completeness and no liability is accepted for any loss arising from reliance on it. Danske Bank, its affiliates or staff, may perform services for, solicit business from, hold long or short positions in, or otherwise be interested in the investments (including derivatives), of any issuer mentioned herein. The Equity and Corporate Bonds analysts are not permitted to invest in securities under coverage in their research sector. This publication is not intended for retail customers in the UK or any person in the US. Realkredit Danmark A/S is a subsidiary company of Danske Bank A/S. Danske Bank A/S is authorised by the Danish Financial Supervisory Authority and subject to limited regulation by the Financial Services Authority (UK). Details on the extent of our regulation by the Financial Services Authority are available from us on request. Copyright (C) Realkredit Danmark A/S. All rights reserved. This publication is protected by copyright and may not be reproduced in whole or in part without permission.